

# Scale Control in Georgia Pecans

Will Hudson

And

Jim Dutcher

# Types of Scales

- Soft scales:
  - Feed in conductive tissue
  - Produce lots of honeydew
  - Cover is part of the insect
- Hard (Armored) scales:
  - Feed cell by cell
  - No honeydew
  - Cover is separate



# Armored scale life cycle

- Males develop wings (2), and emerge to seek a mate.
- Females never become “insect-like”
- Male covers are usually smaller, and often white.





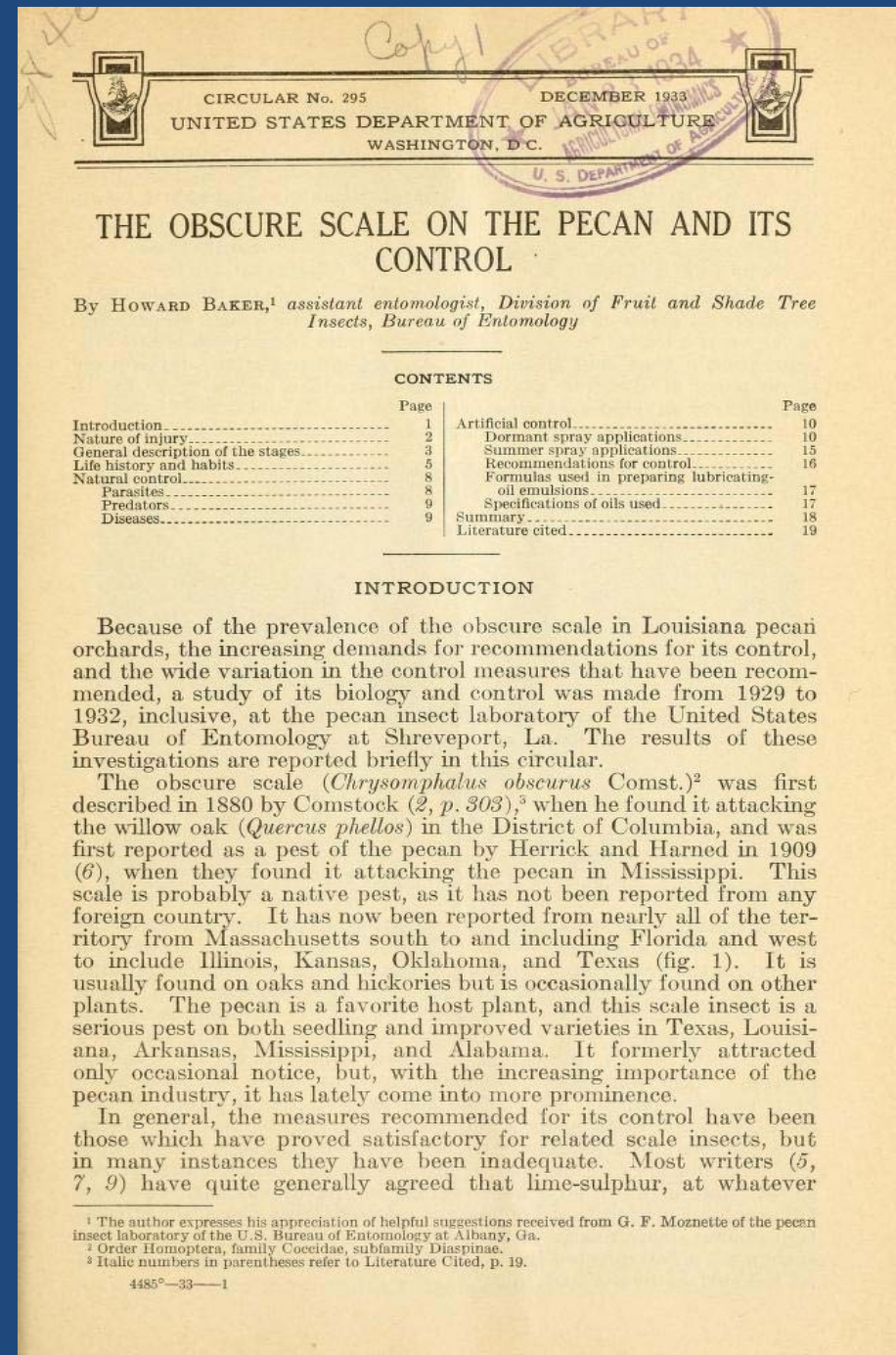
UC Statewide IPM Program  
© 2002 Regents, University of California





# Obscure Scale

- Life Cycle:
  - Eggs produced from late May through August
  - Nymphs feed and mature through the fall
  - Feeding resumes in spring, with males maturing in May

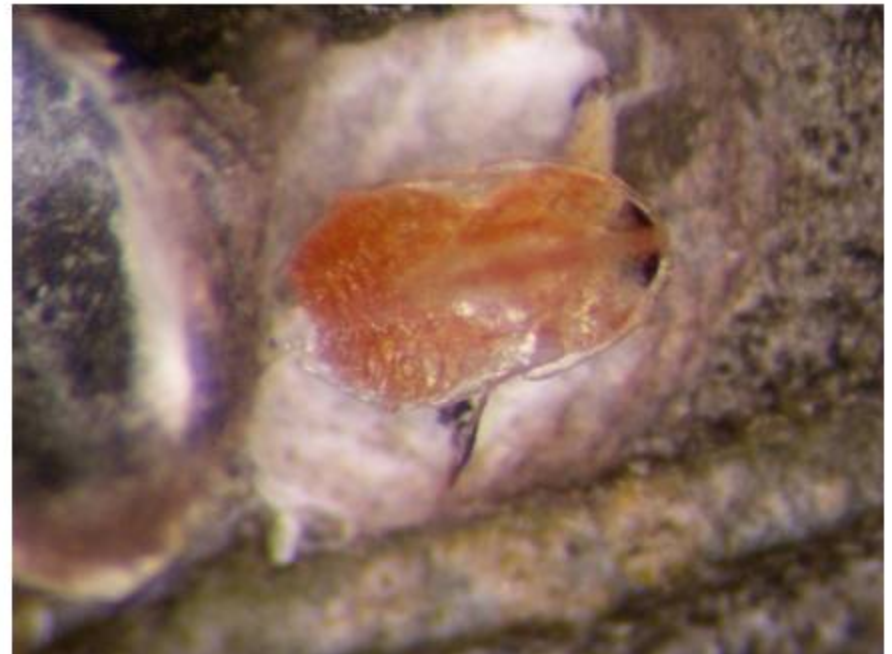


Feb. 1, 2013

**Immature Female Scale**



**Immature Male Scale**







Obscure scale crawlers hatch in June-July.

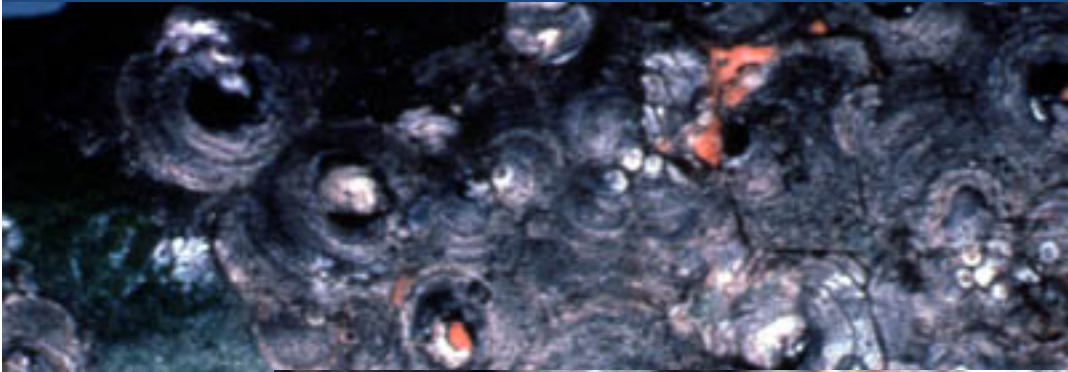


UGA, Kris Braman  
Obscure Scale









This scale has been attacked by fungus



# Snow Scale





UGA16260



UGA162601



University of Florida

# Armored Scale Control in Pecans

- Most nicotinyls have little effect on armored scale.
- Horticultural oils are effective but coverage is critical.
- Esteem/Knack is good as a growth regulator.
- Timing is everything.



Obscure scale after oil spray

