

INSECT UPDATE

Will Hudson

Jim Dutcher

University of Georgia

2012 SURVEY RESULTS

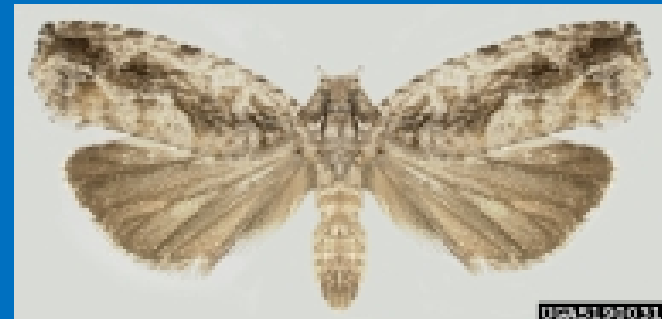
Meeting	YA	BPA	PLSM	PNCB	HSW
B/L	1.10	2.20	0.75	2.00	1.80
Albany	2.29	2.33		1.21	1.25
Ware	1.31	1.08	0.69	1.15	0.85
PU/WI	1.45	1.82	0.00	0.91	0.91
Peach+	1.05	1.91	0.55	0.73	0.64
COOK	1.27	1.45		1.00	0.91
EVANS	1.13	1.21	1.67	0.87	0.74
Overall	1.38	1.67	1.14	1.04	0.92

2013 SURVEY RESULTS

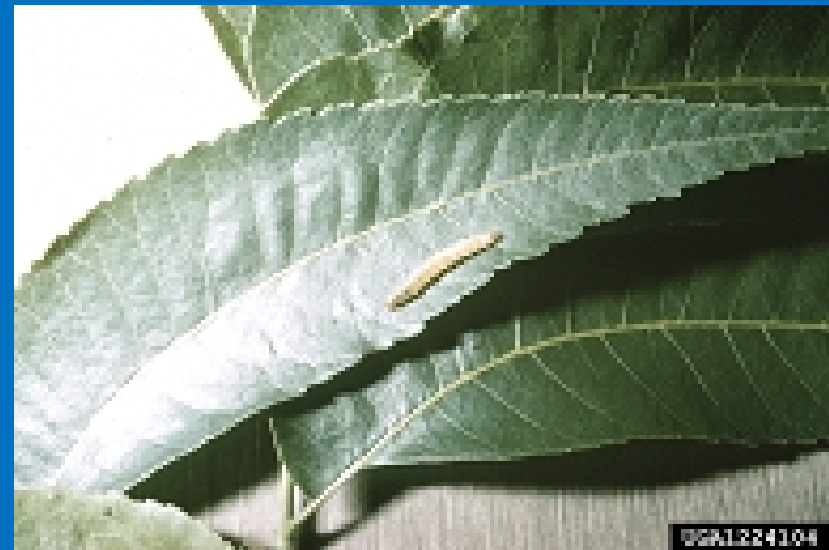
Meeting	YA	BPA	PLSM	PNCB	HSW
Albany	2.35	1.90	0.90	1.13	1.00
PU/WI	2.29	2.43	0.14	1.00	1.14
Cook	0.88	0.88	0.50	0.63	0.50
Evans	1.74	1.89	0.96	1.30	0.78
Peach	1.73	2.73	0.82	1.09	1.18
Appling	2.22	2.00	0.95	1.63	1.68
Jenkins	1.37	1.47	0.42	0.89	1.00
Crisp	1.20	1.60	0.90	1.70	1.80
Overall	1.72	1.86	0.70	1.17	1.14

New Plantings

- Budmoth
 - Early season attack can seriously damage young trees
 - Larvae feed on leaves, buds and shoots
 - Timing of treatments is important
 - Lorsban, Spintor, Intrepid, Belt, Altacor are effective



Pecan budmoth



All aphids are not the same!

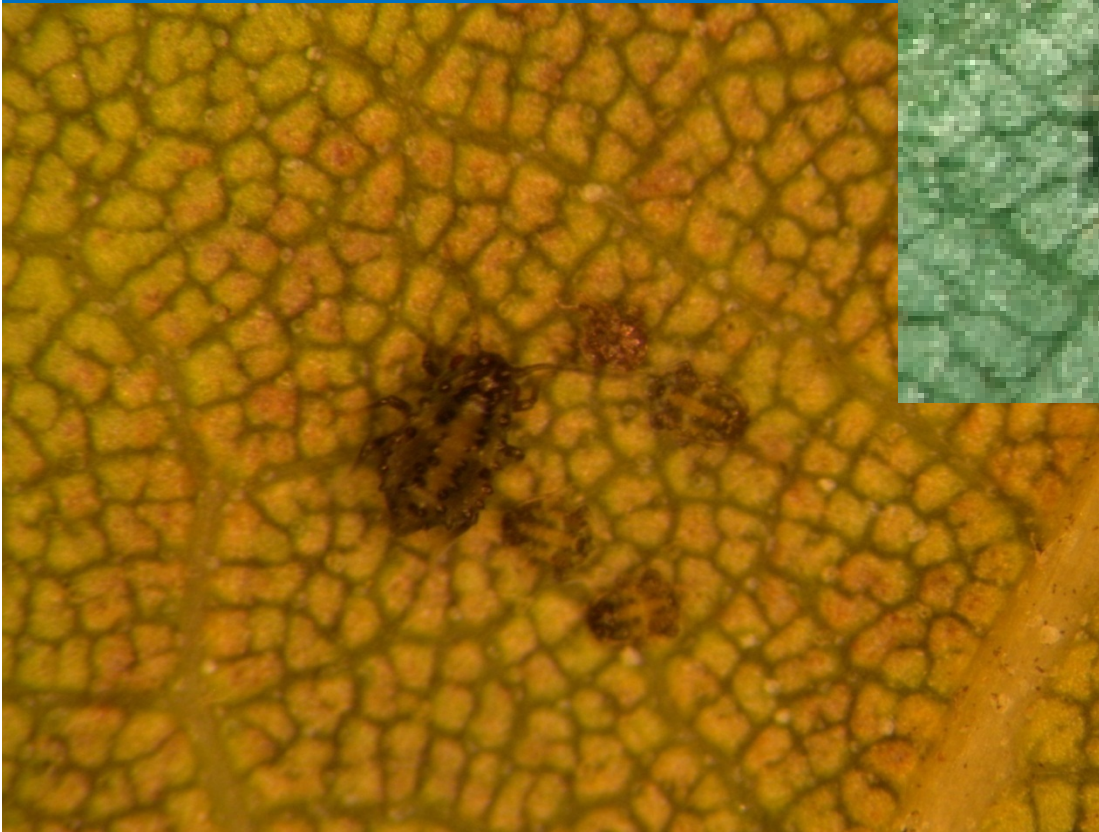
Early season yellow aphid populations feed beneficials and keep them building in the orchard.



Early season black aphids are here and gone, making them hard to target.



Black Pecan Aphid





Black aphid vs. Mummy



SO, WHAT?

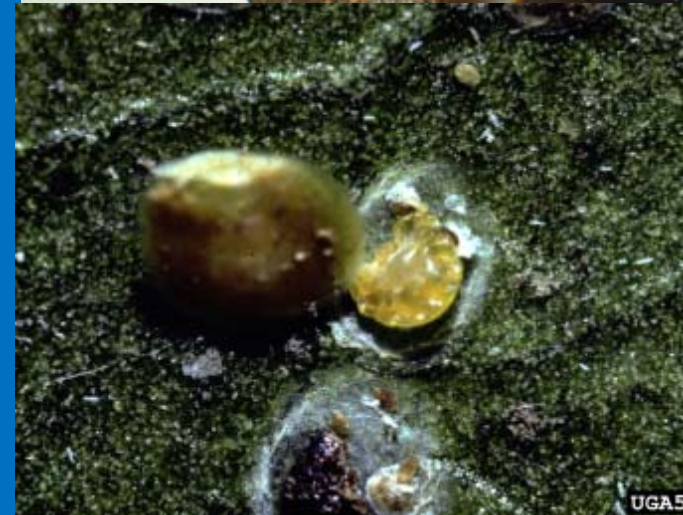
- Rule of thumb: YPA/BMA threshold of >20 aphids per compound leaf early season, >50 after mid August. If there are lots of beneficials, hold off.
- Treat black aphids when nymph clusters indicate establishment.
- Avoid broad-spectrum insecticides if possible, especially early season.
- Extreme heat slows aphids and reduces insecticide efficacy.

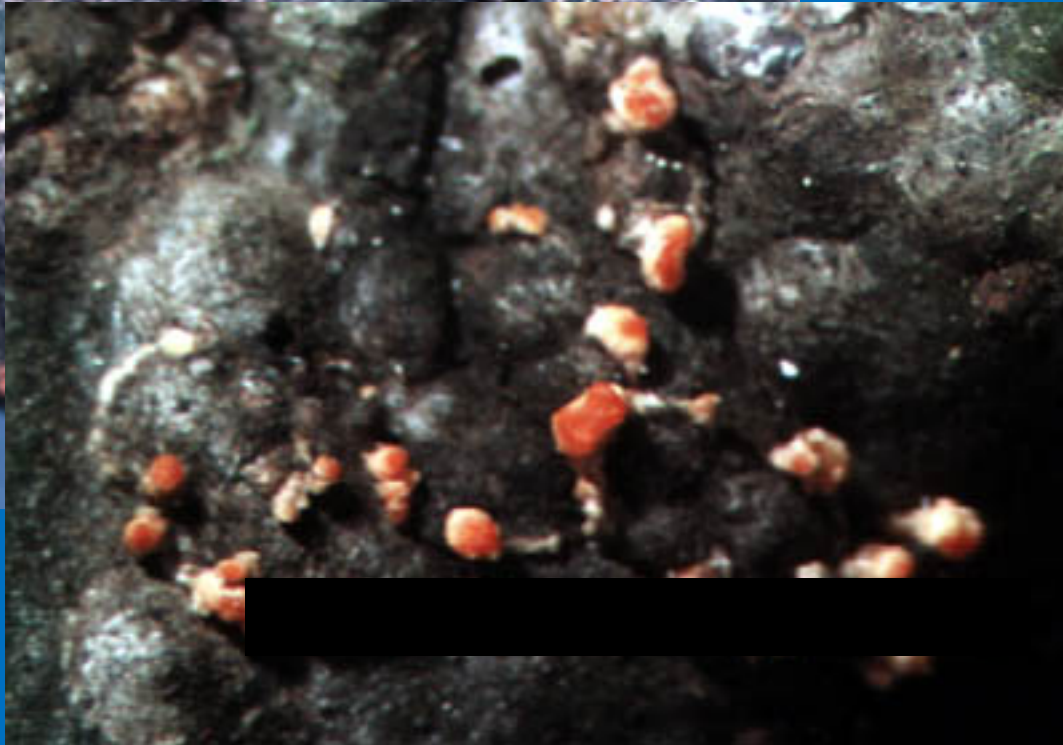
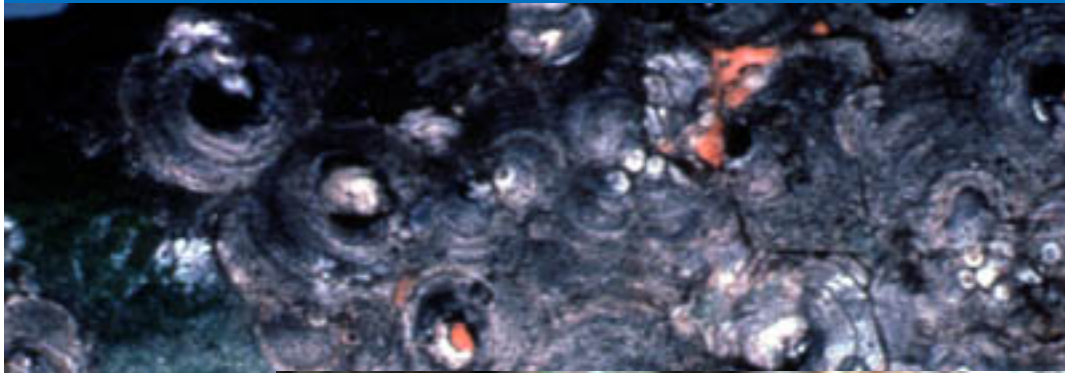
New Aphid Products

- Closer (sulfoxaflor) from Dow
- Apta (tolfenpyrad) from Nichino Am.
 - 17-27 oz./A
 - Controls aphids, shuckworm, PNCCB, weevils
- Beleaf (flonicamid) from FMC
 - Similar to Fulfill, inhibits feeding of aphids
- Athena (bifenthrin + avermectin) from FMC
 - Insecticide/miticide, not yet labelled in GA

Types of Scales

- Soft scales:
 - Feed in conductive tissue
 - Produce lots of honeydew
 - Cover is part of the insect
- Hard (Armored) scales:
 - Feed cell by cell
 - No honeydew
 - Cover is separate





Parasite emergence holes
are visible on these scale covers



Armored scale life cycle

- Males develop wings (2), and emerge to seek a mate.
- Females never become “insect-like”
- Male covers are usually smaller, and often white.





UGA16260



UGA162601



University of Florida

Scale Control in Pecans

- Most nicotineyls have little effect on armored scale.
- Horticultural oils are effective but coverage is critical.
- Esteem/Knack is good as a growth regulator.
- Timing is everything.

Extension Programs

- County production meetings
- GPGA meetings
 - Perry March 26
- Pecan Scout School
 - March, odd years (March , 2015)
- Pecan Newsletter
- Website
 - www.cpes.peachnet.edu/ugapecan/ or www.ugapecan.org
- Hotline: 800 – 851 - 2847