

# Pecan Management Update 2012

Lenny Wells  
UGA Horticulture

# Foliar Sulfur Trial

	Leaf Nitrogen	Leaf Sulfur	Chlorophyll Index 7-11-11	N:S Ratio
Sulfur 1 qt/100 g	2.72a	0.20a	43.6a	13.6a
Urea 4 lbs/100g	2.58b	0.18b	42.0b	14.1a
Sulfur+Urea	2.70ab	0.19ab	42.3ab	14.0a
Untreated	2.73a	0.20a	41.4b	13.7a



# Foliar Sulfur Trial

	Percent Kernel	Nut Weight	Count	N:S Ratio
Sulfur 1 qt/100 g	50.7a	9.7a	47.0b	13.6a
Urea 4 lbs/100g	50.2a	9.2b	49.2a	14.1a
Sulfur+Urea	50.2a	9.5ab	47.6b	14.0a
Untreated	50.6a	9.2b	49.2a	13.7a



# Potential Added Value of Sulfur

- Sulfur has some level of disease suppression on many fungal plant pathogens
- SIR-Sulfur fertilization increased resistance against various fungal pathogens in many crops
- Sulfur effectively suppresses mite populations



# Alion Herbicide

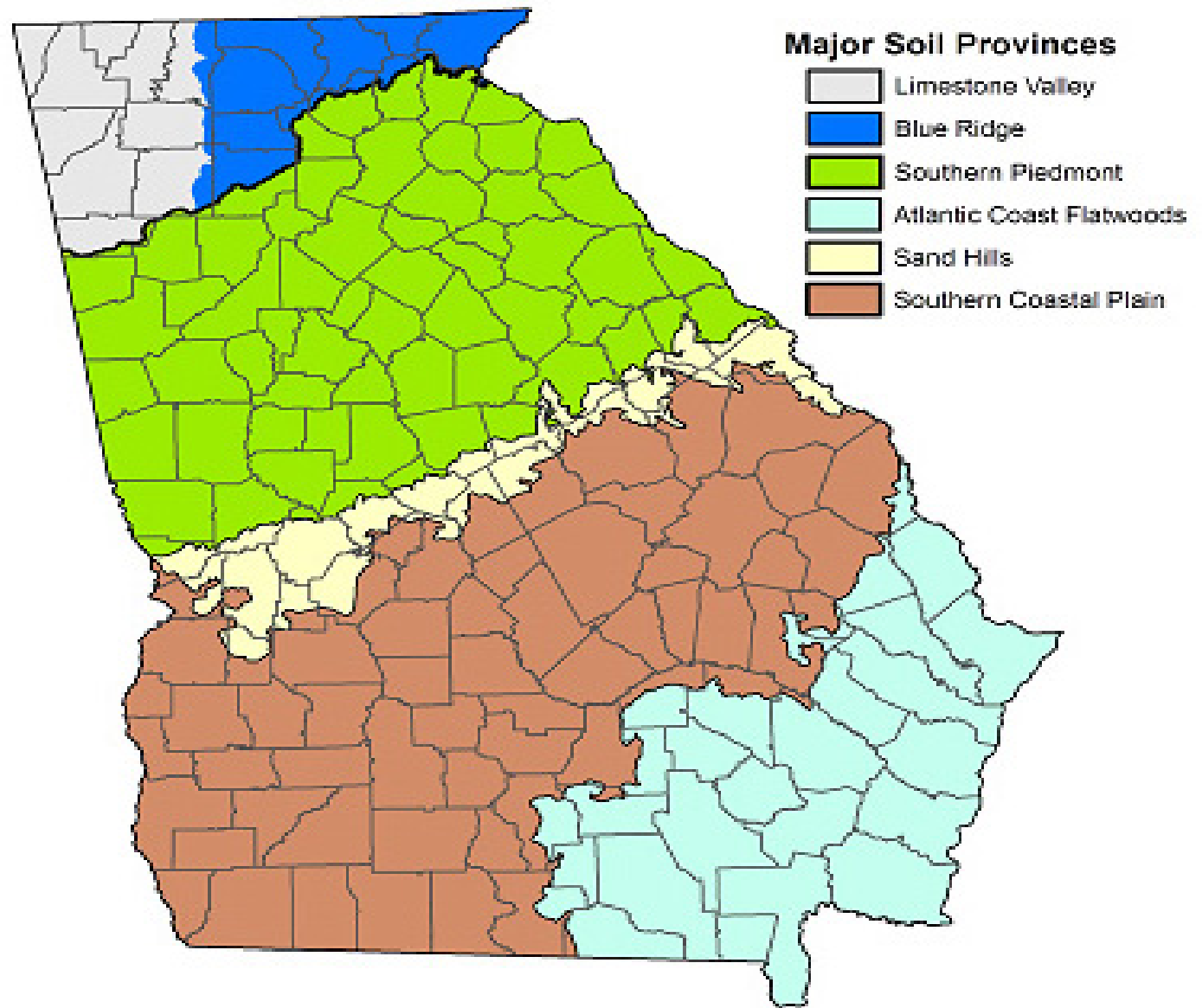
- (indaziflam)Pre-emergent herbicide
- Activated by rainfall/need good soil contact
- Affects actively growing root meristems
- Excellent residual weed control---6 months?
  - Grasses and broadleaves
- Two applications---Spring/Fall
- Trees must be 3 yrs old
- 5 oz/Acre
  - Max 10 oz/acre
- Resistance Management
- Tank Mix with burn-down herbicide and liquid N



# What happened to pecan quality in 2011?

Tifton	From Aug-1	To Oct-31	Total Precipitation [in]	Number of Rainy Days
	2011	2011	12.34	22
2010	2010	6.12	22	
2009	2009	12.73	35	
2008	2008	18.89	30	
1961	1990	10.00	N/A	
1971	2000	10.12	N/A	

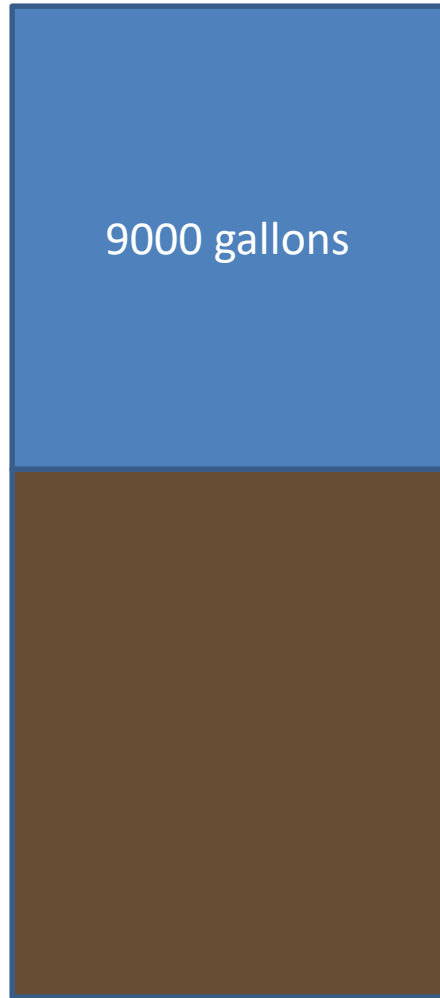
Jeffersonville	From Aug-1	To Oct-31	Total Precipitation [in]	Number of Rainy Days
	2011	2011	5.65	21
2010	2010	11.23	22	
2009	2009	20.69	41	
2008	2008	9.95	24	
1961	1990	10.02	N/A	
1971	2000	10.41	N/A	



**Figure 3.** The six soil provinces in Georgia.

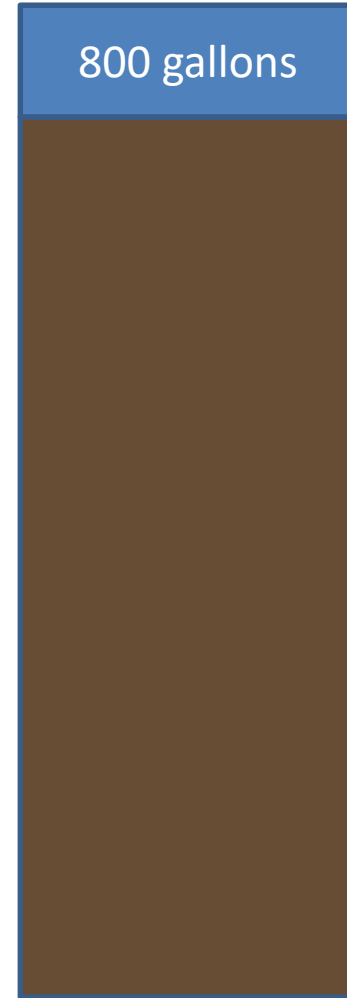


# Soil Depth & Water



**TOPSOIL**

**SUBSOIL**



7 in. topsoil  
4 day supply

# Pecan Irrigation Schedule

Month		Drip (%cycle) (hrs/day)		Sprinkler (inches/A/wk)
April		60	7.2	0.5
May		70	8.4	.75
June		80	9.6	1
July		90	10.8	1.25
August		100	12	1.5
September		100	12	1.5
October		90	10.8	1
November		60	7.2	0.5

# Pecan Irrigation Schedule

Month		Drip (%cycle) (hrs/day)			Sprinkler (inches/A/wk)
April		60	7.2		0.5
May		70	8.4		.75
June		80	9.6		1
July		90	10.8		1.25
August		100	12		1.5
September		100	12		1.5
October		90	10.8		1
November		60	7.2		0.5

# UGA Recommended Pecan Cultivars

Low Input	Medium Input	High Input	Conditional	Trial
Amling	Caddo	Desirable	Cape Fear	Byrd
McMillan*	Forkert*	Pawnee	Creek	Zinner*
Excel*	Oconee		Kiowa*	Lakota*
Sumner*				Mandan
Elliott*				Zinner
Kanza*				

\*Type II

Morrill=44 nuts/lb; 65%; Oct. 3  
 Cunard=41 nuts/lb; 63%; Sept 24  
 Eclipse=

# Pecan Info

- [UGA pecan website: Google “UGA Pecan”](#)
- Beginners Pecan Course: March 13, 2012
- GPGA Conference: March 28, 2012