

Extension Food Science Outreach Program

The University of Georgia

240 Food Science Building at 100 Cedar Street

(Corner of Cedar Street and East Campus Road)

Athens, GA 30602-7610

phone (706) 542-2574 ~ fax (706) 542-9066

email efs@uga.edu ~ website www.EFSonline.uga.edu

Please note that there is NO public or visitor parking available at the Food Science Building. You will need to park in the South Campus Parking Deck and walk about four blocks to the Food Science building (see attached map), or ride the free shuttle to and from the host hotel, Foundry Park Inn. The shuttle schedule is in your Foundry Park Inn check-in packet.

Driving Directions to the South Campus Parking Deck from the Athens Perimeter (Loop 10) (Blue Route on map): Exit Loop 10 at College Station Road and turn west (toward campus). Travel west on COLLEGE STATION ROAD until you reach the CSX Railroad crossing (3rd traffic light from Loop 10) at EAST CAMPUS ROAD. Get into the right-hand lane and turn north (right) on EAST CAMPUS ROAD. Get in left lane to turn west (left) onto CARLTON STREET at the first traffic light. Continue on Carlton Street until you pass STEGEMAN COLISEUM on your left. At the next light (Sanford) turn right (northeast) behind the Georgia Center for Continuing Education. The South Campus Parking Deck entrance (green square on map) is the next building on your left (west). You are responsible for any parking fees. **Parking is \$10 per day.**

Driving Directions from Foundry Park Inn to the South Campus Parking Deck: *Shuttle service to and from the Food Science Building will be provided for workshop participants. See schedule in your check-in packet.*

If you prefer to drive yourself, you still must park at the South Campus Parking Deck next to the Georgia Center for Continuing Education at 1197 South Lumpkin Street. You will be responsible for any parking fees. **Parking is \$10 per day.**

To go to the Parking Deck from the Foundry Park Inn, turn right from the parking lot onto THOMAS STREET and drive over the hill (south) to the fourth traffic signal at West Broad Street. Turn right on WEST BROAD STREET and go to the third traffic signal at SOUTH LUMPKIN STREET and turn left (south). Go to the top of the next hill (through four traffic signals) and turn left onto GREEN STREET to enter the South Campus Parking Deck. If you pass the Georgia Center for Continuing Education on the corner of Carlton and South Lumpkin Streets (#1197), you've gone too far. Enter the parking deck and park at the far end near the Field Street exit and walk to the Food Science Building.

Walking Directions from the South Campus Parking Deck (next to the Georgia Center for Continuing Education) to the Food Science Building on Cedar Street (Red Route on map):

As you exit the east entrance to the South Campus Parking Deck, turn left and go two blocks north on SANFORD DRIVE. Watch for SNELLING DINING HALL (red brick building across the street, light blue square on map) - that's where you'll usually have lunch while you're attending our courses.

Turn right (east) just past the SCIENCE LIBRARY/BOYD GRADUATE STUDIES buildings and follow the sidewalk east to D.W. BROOKS DRIVE. Cross D.W. Brooks Drive and turn left (north) on D.W. Brooks Drive until you pass BARROW HALL and turn right onto the sidewalk. Follow the sidewalk around Barrow until you get to CEDAR STREET.

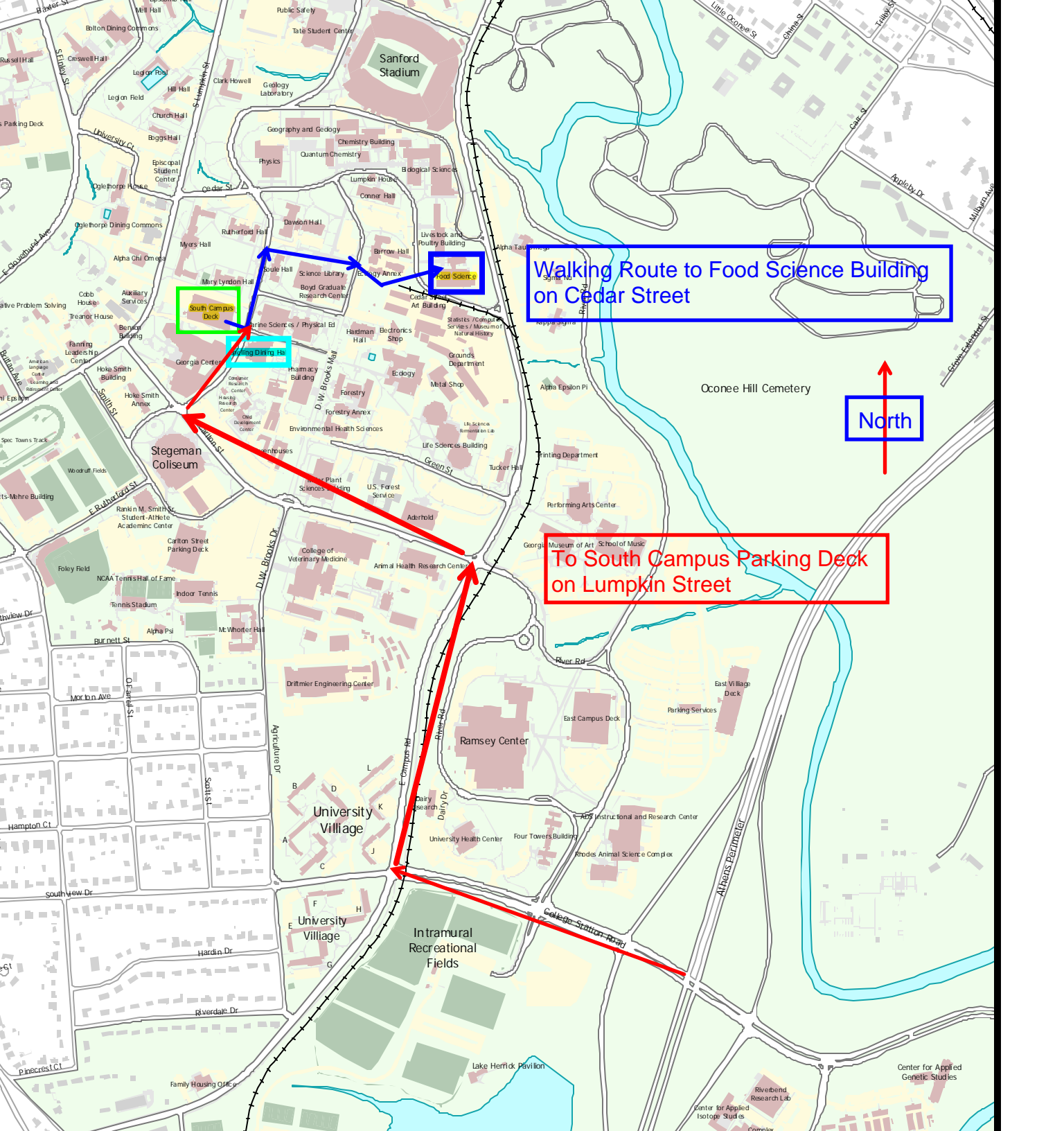
The FOOD SCIENCE BUILDING (royal blue square on the attached map) is across Cedar Street, to the right of the Poultry Science building. Enter through the glass double doors and sign in. The Extension office is the first suite on the left (Room 240) and the EFS classroom is in Room 242.

We appreciate your attendance and interest in our workshops.

The UGA Extension Food Science Outreach Program



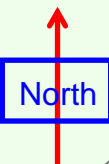
The Food Science Building (left wing) is the location for many Extension Food Science workshops.



Walking Route to Food Science Building on Cedar Street

South Campus Deck

Food Science



To South Campus Parking Deck on Lumpkin Street

Stegeman Coliseum

University Village

University Village

Intramural Recreational Fields

Ramsey Center

Oconee Hill Cemetery

Lake Herrick Pavilion

Riveland Research Lab

Center for Applied Genetic Studies