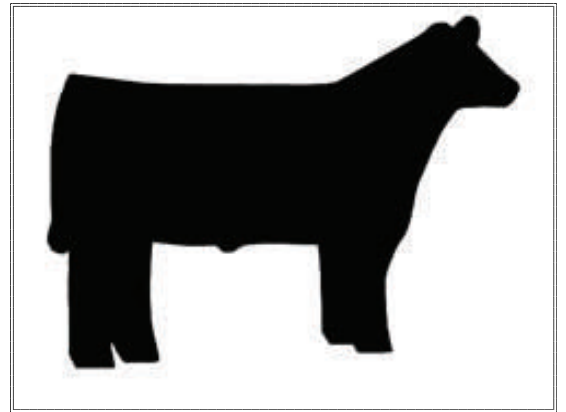


Henry County Hindquarters

First Year Guide

Becoming a Champion



January 2009

. Created as a guide to help you raise your champion as well as to show you the basics of Showmanship and grooming so that you'll be prepared for show day!

Table of Contents

Introduction	Page 3
Facilities for your new friend	Page 4
Selecting your Future Champion	Page 5
Knowing what to feed	Page 6
Daily Care	Page 7
Preparing for Show day	Page 8
Showmanship 101	Page 9
Grooming Basics	Page 10
At the Show	Page 11
There's More!	Page 12



Introduction

I am so excited that you have decided to show a calf. (You'll probably hear me say this a lot, but trust me it is true!)

I started showing cattle when I was in the 12th grade. I had no idea then that this club would make such a profound impact on my life. I hope that statement is also true for you in the future. My only wish is that I would have known now what I didn't know then. I also wish that I would have had a booklet like this one to guide me when I began. Even though that is a lot of what showing a calf is all about. It's a learning process and what works for some might not work for others. But I wanted to give you a basic guide to start you in the right direction.

No matter what you have chosen to show, whether it is a steer or heifer, I hope that you will give it 110% this summer and work with your calf and I know that you and your new pet will succeed.

If you ever need ANYTHING don't hesitate to call me. I will answer any questions you have, (and if I don't know the answer I will find it), I'll even drive out to your farm and help if that's what you need! I want you all to enjoy this program as much as I have. I know it can be difficult at times, but you can get so much out of it!

Thank you so much in advance for being an active member of this club! I hope this booklet will help you prepare for our show as well as others

Good Luck!

Katie Gilbert

Facilities for your New Friend



Your calf will need enough space to feel comfortable in as well as an area that is cool.

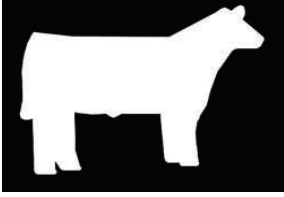
The stalls I used for my show cattle were 12ft x 12ft. I also had a large fan mounted inside the stalls so that they stayed cool. (We bought ours from an old chicken house for \$35 each) We also hooked up a mister system that kept the calves slightly wet during the day, but this is not a necessity. (You can purchase a mister system and a fan through www.sullivansupply.com)

You should keep your stalls clean to help fight off bacteria and any types of diseases or fungi. We put old conveyer belt from a rock quarry down to make the stalls easier to clean, and then we placed shavings on top of it; this helps if your calf does get sick or the stalls get really dirty you can rake up all of your shavings and disinfect the mats/belt without a problem.

In the evenings you should have a place to turn your calf out. We just had a fenced-in lot behind the barn that we let ours out in the evening so that they could move around. It also allowed them to eat hay. We didn't want to put this in the stalls because it gets messy after a few days. But make sure there is someplace for your calf to take shelter if its storming or too hot after you've turned

Selecting Your Future Champion

Heifers

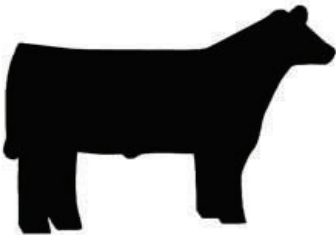


Heifers should look feminine, have a long, smooth neck, and smooth shoulders. They should have a strong level top, as well as be deep bodied and have a great spring of rib. Finally they should have a wide, square rump, smooth muscle, adequate amount of bone and walk soundly.

Benefits of Showing a Heifer

Showing a breeding heifer is a great way to start your own herd of cattle or make a profit. One important thing to look for is not just how she looks but how she will perform down the road. She should grow into a highly fertile female that will provide milk and pounds to her offspring.

Steers



Steers should have a long neck and smooth shoulders. They should have a thick, strong, square topline. Steers should have a wide rump. These animals should also have a lot of muscle and thickness. There should be ample amount of bone and they should be able to walk soundly.

Benefits of Showing a Steer

This is a great project that does not require long-term commitment. But it allows the exhibitor the opportunity to show, as well as earn some money in the end.

Knowing What To Feed

It is very important that you understand what you are feeding your animals as well as their individual requirements. Every animal is unique and gains weight at a different rate.

There are several pre-mixed rations that you can buy for your animals. I used Southern States Bull Test as the base for my animals ration (or feed).

As a general rule you should be feeding your animal 2% to 3% of their body weight each day. So for example: Your calf weighs 525lbs., 2% of their weight is 10.5 lbs. So you would feed your animal 5.25 lbs in the morning and in the evening. They'll also need hay in their diet to help with digestion. This will allow your animal to reach optimal condition and look their best.

Good management practices are also essential to promoting growth. These practices include:

- Providing fresh clean water at all times
- Keep feeding troughs clean from debris, dirt, and uneaten feed.
- Don't allow feed to become wet or moldy
- **Feed at a regular time twice a day! Preferably in the early morning and**

Feeds 101

<p>Corn:</p> <p>High energy feed used for adding condition (or fat).</p>	<p>Cotton Seed Hulls:</p> <p>High fiber ingredient important for digestion.</p>
<p>Barley:</p> <p>High energy feed that can be a substitute for corn.</p>	<p>Cotton Seed Meal:</p> <p>High protein ingredient that promotes growth and development .</p>
<p>Oats:</p> <p>Balances protein, energy, and fiber feed used for maintenance.</p>	<p>Soybean Meal:</p> <p>Also used for growth and development.</p>



Daily care

" A good daily routine is essential. Well trained hair and a well trained animal will give you a competitive edge. "

Training Hair

By brushing the hair repeatedly, you can train your calf's hair to cover up its faults, or problem spots. You should brush your animals hair at least twice daily. A good time to do this is in the morning and the evening when its coolest. During warm days, rinsing your animal will help to cool them down as well as encourage hair growth. Don't let your animal dry on its own! Brush the hair in the correct direction. This will help to train the hair and speed up drying.

Blow Drying

A cattle blow dryer can be a great tool for speeding the drying process and working hair. When using a dryer, always blow the hair in the correct direction. A blower can also be used on a dry animal to set hair products, remove dirt, or just to help train hair.

Washing Your Animal

Rinsing your animal everyday will not only stimulate hair growth, but it can also help them get used to being handled. Washing with soap is important to remove dirt and buildup. However, use a mild soap (*I used Ivory dish soap*) to prevent drying out the animal's skin and always make sure to thoroughly rinse out all of the soap; otherwise your animal may get dandruff. Scrubbing with a brush will help remove dirt and promote hair growth. Start rinsing at the top and work your way down, keeping the water nozzle in a downward direction. Be mindful of your animals ears. It is important to keep the face clean, however you do not want a lot of excess water to get in their ears!

"To get that highly fitted look, it starts before show day."



Preparing for Show Day!

It takes a lot of hard work to be ready for a show. Besides your basic daily care and feeding, you must practice with your animal. Make sure that your animal is very comfortable with you working with their feet, so that you are able to set them up. Also practice with a show halter. Sometimes the chain can frighten calves, so it's best to do it at home for the first time where at least their surroundings are familiar.

You will also want to pack your Show Box a week or two in advance to make sure you have everything you need.

You can find all of the supplies you might need at:
www.sullivansupply.com.

Check List:

- | | |
|---|---|
| ***** Health Papers***** | * Foam |
| * Neck Rope | * Oils and Sprays (Kleen Sheen, Final Bloom, etc) |
| * Rice Root Brush | * Paints (that match your calf) |
| * Wash Brush | * Water hose (& nozzle) |
| * Soap (Ivory dish soap or other mild soap) | * Show Halter |
| * Scotch Comb | * Show Stick |
| * Blow Dryer | * Towels and/or Wipes |
| * Adhesives (your choice of leg adhesive and tail adhesive) | * Water Buckets |
| * Adhesive Remover (my favorite is Hocus Pocus) | **Enough feed** |
| | * Feed Bucket |

Showmanship 101

Showmanship is based on how well you can exhibit your animal. Winning showmanship is a great honor. It requires knowledge about your animal such as age, weight, faults and good points, etc. Showmanship is something that starts at home with a lot of practice!

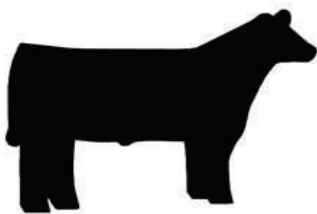
What to Wear

You and your animal should look nice. A nice tucked in collard shirt & jeans are important. You should wear some type of boots (NO tennis shoes). You will place a scotch comb in your back right pocket in case the judge decided to touch your animal during showmanship, you're able to comb your calf's hair so that he/she still looks good!

Setting Up

When you first enter the ring, you will more than likely be asked to line your animal up side by side with the other competitors in the class. This is when the judge will be looking at how well you can set your animal up. It is important that you stay in a straight line with the other animals if at all possible. A good rule of thumb is to line your calf's front feet up with the front feet of the first calf in line.

You will be setting your calf up for a "Butt" or "rear shot". This is simply where you place all four feet square. Your front legs should be even as well as your back legs.



Next you will walk around the ring and stop head to tail with the other competitors (in a single filed line). Here you will set your calf up just like this picture. The back leg on your side comes up slightly. This is what we call a "profile shot".

Something that is key: ALWAYS HOLD THE HEAD UP!

If you practice enough, you can teach your animal to *walk* into "position". This looks GREAT to a judge and it makes your animal look more natural!

Its also very important to be confident and pleasant! Stand up straight and present your animal! Make sure you are watching the Judge!

Grooming Basics

Once again, this is something that must start at home. To make grooming a lot easier, you should already have the hair trained in the correct direction and should have somewhat of a thick coat.

When you first begin: **BLOW YOUR ENTIRE ANIMAL!!!!** This will get rid of all debris and help prepare the hair for the products you are going to use.

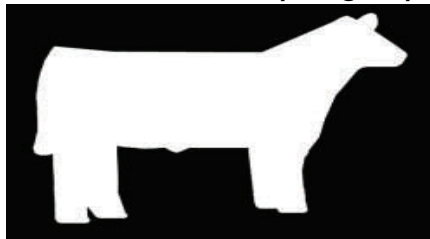
Next, spray a *light coat* of FOAM on the body of your animal. (*AVOIDING LEGS, TAILHEAD, NECK AND FACE!*). Brush in with a rice-root brush. Then Blow hair at a 45 degree angle, making sure the product is in good. The foam is used somewhat like a Mousse to set the hair in place.

Next you will need to “bone” the legs. Use your choice of adhesive (for a beginner, I would suggest the lightest adhesive, talk with your salesman). Starting with the back legs, make sure that the legs are clean (*HINT* use a clean rice root brush and brush all the leg hair up so that the hair is loose and ready). Spray a LIGHT spray on to legs and comb up and out with scotch comb. The trick is to make the legs look natural, but your still trying to increase the appearance of bone and make the leg look bigger. Continue spraying and combing. You will do both back legs, up to the hocks, and both front legs, to the knee and then blending the hair up/forward.

Next you will use adhesive to bring the tail head to a point. You want it to almost favor a Mohawk. Simply spray a **light** coat onto the tail head and comb up towards you. You can also use your adhesive can to flatten it on the sides.

*If you have a black calf, you may use a product called ultra white and spray on the legs and tail head where you’ve already sprayed the adhesive. Spray enough to cover the areas and let dry. (***While its drying it’s a smart idea to blow the calf’s body hair for a moment, avoid places with adhesive***) Then Spray with Black Paint, making sure to cover all white areas! This will make a calf who doesn't have a lot of bone appear to have more. The white will fill in between the hair and add more volume.* Wherever you spray white, you must cover with black paint. Spray the paint on in layers so that the legs don't look “gunky”.

Finally you want to spray some type of oil, such as final bloom or pink oil, to the body hair and head. This gives the coat a shiny finished look. Make sure you give yourself time to blow it in and put on your show halter!



Grooming
Guide



At the Show

REMEMBER ALL ANIMALS MUST HAVE UP TO DATE HEALTH PAPERS! (you may get this from your local large animal veterinarian)

Upon check in, your calf will be weighed so that the officials can place him/her into the appropriate weight class.

Once you have the weight, you will have ample time to complete your final calculations for your record book and turn it in.

You should make sure the bedding for your calf level before tying it in the stall area. Give them enough time to get adjusted to their surroundings before you feed them.

You may rinse your calf and blow it dry so that it is clean and presentable, as well as cool.

Make sure you schedule your time so that your calf can eat and so that you have enough time to get ready and groom your animal before the show starts. (On grooming night, you will only have to wash and dry your animal before he/she enters the ring.)

It is important to keep your stalls clean from manure and hay, not only for appearance but also for sanitary reasons. Be courteous to others in your club at all times.

Make sure you water your animal often, since you will not be able to keep a bucket in front of them at all times like they are used to.

It is important that you keep a neck rope on your animal when it is tied in the stalls. This is just to help secure them. In the event they untie their halter, the neck rope is their to keep them in place until someone can get to it.

There's More!

Besides showing a calf at the Henry County Show, there are other numerous ways for you to be involved and active. You can travel to many different state and county shows.

You can also compete in Livestock Judging and/or Livestock Quiz Bowl. Both are a way to gain/improve your knowledge about not only cattle but other livestock species such as sheep and swine.

You can compete in the record book competition at both county and state level. In the real world, farmers have to be able to keep accurate records and know whether they are losing money or gaining it, as well as be able to keep accurate feeding and medical records of their animals. This is also a great way for you to stay up to date about your animal for showmanship, for example knowing the rate of gain, how much you feed, etc.

There are also other junior organizations that you can join. Examples are Breed associations and the GA Jr. Cattlemen's Association. Both offer a variety of activities to its members.

I definitely suggest giving all of these opportunities a try!

Henry County Hindquarters

Katie Gilbert
97 Lake Dow Road
McDonough, GA 30252

Phone: 770-288-8432

Fax: 770-288-8445

E-mail: gilbertk@uga.edu