



THE UNIVERSITY OF GEORGIA  
**COOPERATIVE EXTENSION**  
Colleges of Agricultural and Environmental Sciences & Family and Consumer Sciences

Seminole County Extension  
207 E. Crawford St.  
Donalsonville, Ga 39845

Phone: (229) 524-2326  
Fax: (229) 524-2856  
E-mail: [ethredge@uga.edu](mailto:ethredge@uga.edu)  
<http://www.ugaextension.com/seminole>

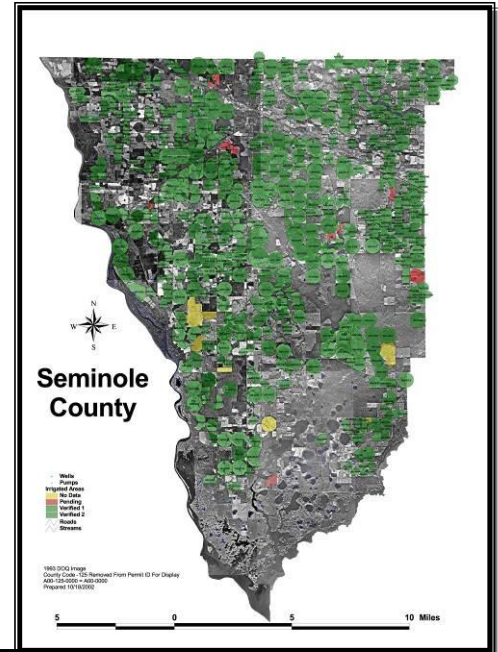
## Seminole Crop E News

March 25, 2011

Farmers and Agribusiness,

We're watching our corn pop up in rows. 36 inch, 30 inch, 15 inch and twin rows (8 inch on 36 middles) . It's looking better after warm temperatures. Rain is needed and many fields have been irrigated. Leaves are rolling in some sandier wheat fields and they are being watered in some cases.

Here's some strip tilled 30 inch corn planted with 33,000 seeds per acre coming up.



**Learning for Life**

Agriculture and Natural Resources · Family and Consumer Sciences · 4-H Youth  
[ugaextension.com](http://ugaextension.com)

An Equal Opportunity / Affirmative Action Institution



Lots of fertilizer and lime is going out on fields. Here's Michael Thompson about to apply some preplant corn fertilizer. Diesel prices are hurting and increasing the cost of most farm operations.

Crimson clover on the roadside is scenic as usual. Sometimes it's planted in wildlife food plots as well. Some folks are preparing for and planting food plots. We had someone take a soil sample of the area he wants to attract deer to and the pH was 4.8. So his main concern now should be liming that area well to get the pH up good growth in his plot.



A good bit of controlled burning going on to control some hardwoods and weedy species in pine forests and reduce fuel on the forest floor in case of a wild fire. This also often helps wildlife.



Wheat is entering late boot or early heading in some fields. Aphid numbers are worrisome in some fields but overall seem to be held in check by predators and parasites.

## **Reflex Preplant Incorporated, New label** **Dr. Stanley Culpepper, UGA Extension Weed Scientist**

1. Remember PRE applications are always more effective than incorporated applications if it gets activated by rainfall/irrigation.
2. Always mix with Treflan or Prowl
3. This label does not cover split applications; working on that for next year. Split applications will likely be the way to go.
4. If Reflex is incorporated deeper than 2 inches you wasted your money!!!!!!!!!!!!!!

### Directions for Use

Apply Reflex at 1 to 1.5 pints per acre as a pre-plant incorporated application for suppression or control of glyphosate-resistant Palmer amaranth (pigweed) in dryland cotton. Apply as a pre-plant incorporated application only to coarse textured soils (sandy loam, loamy sand, sandy clay loam). Incorporate Reflex into a moist soil to a depth of 2 inches or less immediately after application. Incorporating Reflex deeper than 2 inches will greatly reduce control; thus, using a disk for incorporation is not recommended. If ripping and bedding, perform these operations after Reflex incorporation and, even then, control will likely be reduced.

**Note:** Application of Reflex pre-plant incorporated can reduce the level of Palmer amaranth control compared to a preemergence application with rainfall or irrigation activation, however, control is generally superior to preemergence applications without activation prior to weed emergence.

Cotton plants are tolerant to pre-plant incorporated applications of Reflex. Slight injury in the form of stunting may occur but cotton plants generally outgrow these effects and develop normally.

Reflex should be tank mixed with Treflan or Prowl as a pre-plant incorporated application to deliver multiple modes of action for Palmer amaranth control. Reflex should be part of an integrated preemergence herbicide weed management program for controlling Palmer amaranth in cotton.



JC Chance is putting out Telone soil nematicide. He says the autosteer makes it a little easier to keep an eye on everything.

## 2010 Georgia Peanut Achievement Club

PLEASE NOTE: There are changes in the acreage categories and the number of total winners. There will be 10 winners based on the following:

- 1) One state-wide winner with the highest average yield in the 100 - 299.9 acreage category
- 2) One state-wide winner with the highest average yield in the 300 acres plus category
- 3) Eight (8) district winners based on the highest average yield in the following two (2) acreage categories within each of the four GPAC Districts
  - a) 300 - 699.9 acres
  - b) 700 plus acres

Learning for Life

Agriculture and Natural Resources · Family and Consumer Sciences · 4-H Youth

[ugaextension.com](http://ugaextension.com)

An Equal Opportunity / Affirmative Action Institution

The eight (8) district winners will be determined after the highest overall average yield in the state is determined in the 300 acres plus category.

The winners in this year's GPAC, as in the past, will receive a trip and professional improvement seminar sponsored by Syngenta for him or herself, his or her spouse, their county agent and spouse. This year's trip will be to the Southern Peanut Growers Conference, July 21-23, at the Edgewater Beach Resort in Panama City Beach, Florida.

Deadline for entries in to Tifton is **5:00 PM FRIDAY, April 15, 2011.**

Call or email me if you'd like an entry form.

### Question of the Week



Yes, they were Turkey tracks in the corn field. A lot of folks are ready to hunt them this weekend. Here's a gobbler I saw this week.



This week I want to ask about this photo. I was called out to figure out this pond problem. What is it?

Later,  
Rome

Rome Ethredge  
Seminole County Extension Agent