



THE UNIVERSITY OF GEORGIA

COOPERATIVE EXTENSION

Colleges of Agricultural and Environmental Sciences & Family and Consumer Sciences

Seminole County Extension
207 E. Crawford St.
Donalsonville, Ga 39845

Phone: (229) 524-2326
Fax: (229) 524-2856
E-mail: ethredge@uga.edu

<http://www.ugaextension.com/seminole>

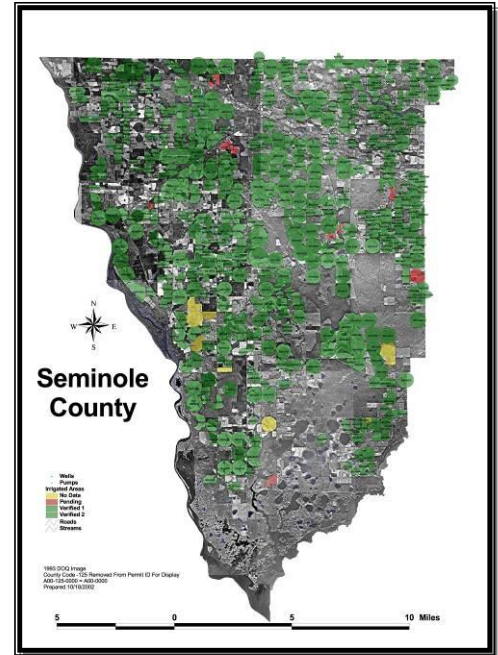
Seminole Crop E News

January 28, 2011

Farmers and Agribusiness,

If oats for grazing got the cold just wrong, they look bad right now but some oats that were planted at a little different time and perhaps fertilized at a different time look better, like these oats on the Hornsby Farm that Judson is showing me this week.

Don't forget our Peanut Production Meeting on Monday at 11 am at the Donalsonville Lions Hall.



Learning for Life

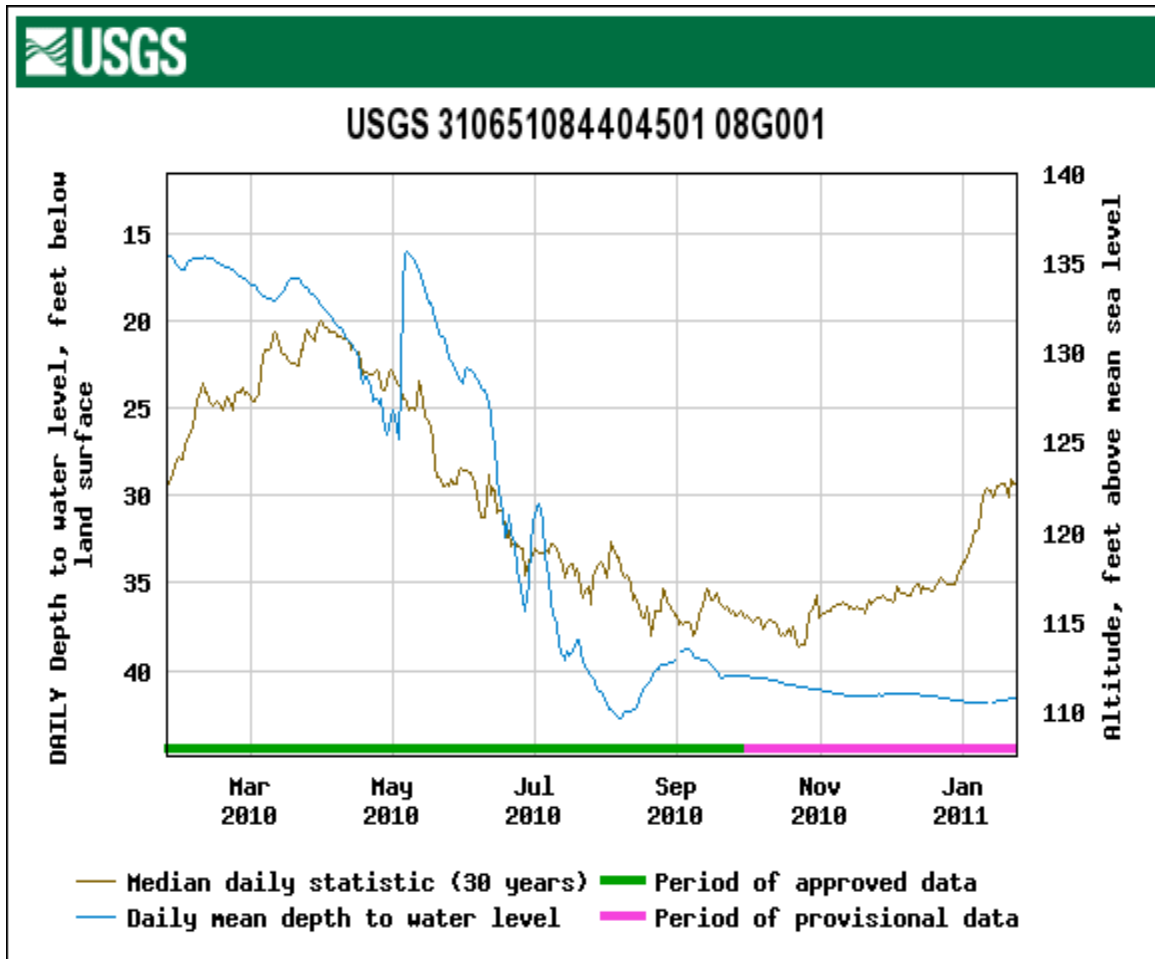
Agriculture and Natural Resources · Family and Consumer Sciences · 4-H Youth

ugaextension.com

An Equal Opportunity / Affirmative Action Institution

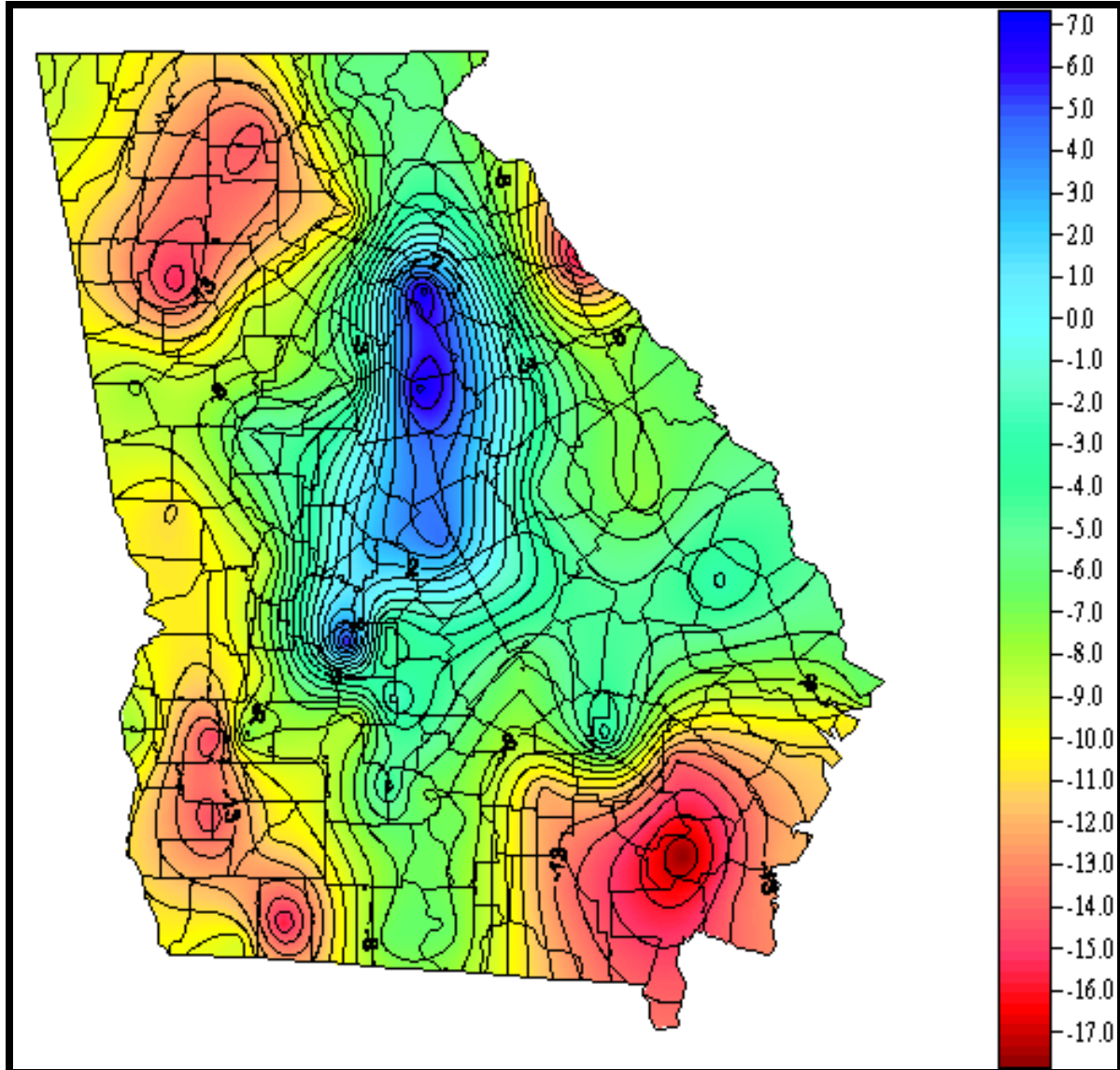
Test Well in Southern Miller County shows how our groundwater level has dropped in 2010. The gold line is the 30 year average water level in the well. The blue line is this past year. This is likely related to a 10 to 11 inch rainfall deficit in southwest Georgia for 2010.

Source <http://waterdata.usgs.gov/ga/nwis/current/?type=gw>



**Precipitation [inches]
Jan 1, 2010 to Dec 31, 2010**

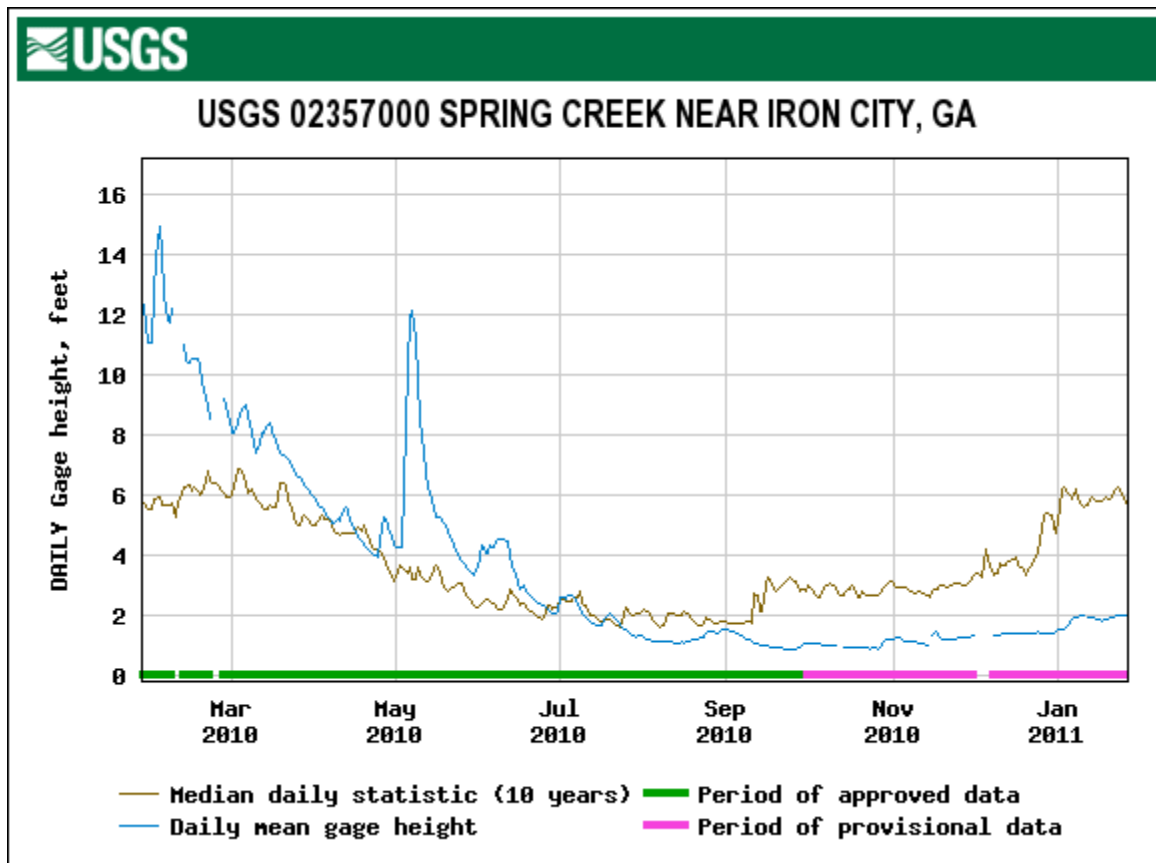
Deviation from Normal (1971-2000)



We were 10 to 11 inches below normal last year on rainfall, I mean precipitation (we did have a little snow for a change).

Source www.georgiaweather.net

Sping Creek Data at Brinson for the past year shows pretty much the same story with high water levels in the spring and lower levels now. The blue line is current levels and the gold line is the average for the past 10 years.



Here's a photo I took this week of Spring Creek up above Brinson.



Canola is growing off well despite the cold weather. Here's Stephen Houston, Jr. with his "greens " he's growing for oil.



Wheat Update

Time to check tillering.

Click below to see my wheat interview on Channel 4 in Dothan AI



[1/25 Focus on Ag](#)



Learning for Life

Agriculture and Natural Resources · Family and Consumer Sciences · 4-H Youth

ugaextension.com

An Equal Opportunity / Affirmative Action Institution

Question of the Week

Last week we had a photo of an old nest in a tree. It was a yellow jacket nest. They almost always nest in the ground but sometimes they'll do something like this.

This week I found this in an oat field that has had no cattle on it. What caused it and why do I see peanut hulls all around?



Later,
Rome

Rome Ethredge
Seminole County Extension Agent