



THE UNIVERSITY OF GEORGIA  
**COOPERATIVE EXTENSION**  
Colleges of Agricultural and Environmental Sciences & Family and Consumer Sciences

Seminole County Extension  
207 E. Crawford St.  
Donalsonville, Ga 39845

Phone: (229) 524-2326  
Fax: (229) 524-2856  
E-mail: [ethredge@uga.edu](mailto:ethredge@uga.edu)  
<http://www.ugaextension.com/seminole>

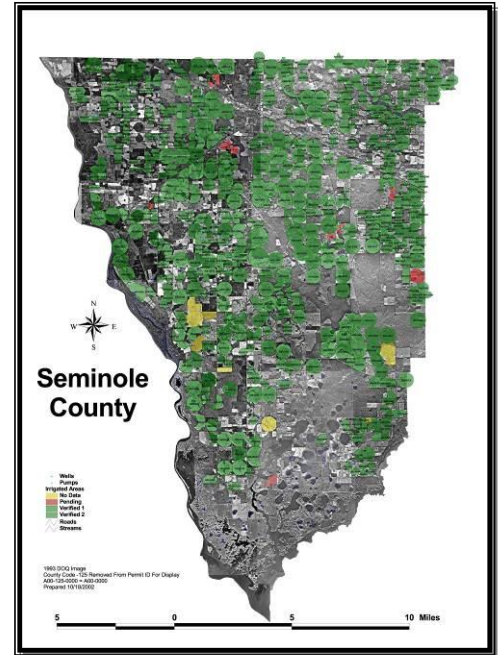
## Seminole Crop E News

February 25, 2011

Farmers and Agribusiness,

Corn planting begins as it seems like a switch has been flipped and it's all of a sudden springlike. Small grains are growing as well and final sidedress needs to go on right away if it's not already applied. We want to get it on before stem elongation.

Here's Billy Grant, Consultant Howard Small and Albert Hention checking the corn planters yesterday on North American Farms.



Here's a short video clip you can click on I took yesterday at North American Farms, here in Seminole County. You can see we were getting dry as the dust is flying. Fortunately we had some rain last night and this morning. We got 0.36 inch at our weather station here in Donalsonville.

<http://www.youtube.com/watch?v=uv3HUKmcJww>



A lady asked me to take down this hornet's nest for her in exchange for the nest. It's amazing what they can build with some chewed up wood and starch from their mouths.

## **Beef Cattle**

The Tifton Beef Cattle Short Course is scheduled for Tuesday, March 1, 2011. In addition, the Tifton Bull Evaluation Center 53rd Annual Sale is set for Wednesday, March 2, 2011

Click here for more info:

<http://www.caes.uga.edu/commodities/animals/beef/stations/index.html>

## **UGA Offers School on Making High-Quality Hay**

ATHENS, GA – Whether you are new to hay production or an old hand at it, the University of Georgia's Forage Team invites you to learn more about producing high quality hay by attending the 2011 Southeast Hay Convention. This year's event will be held on March 29-30, 2011 in Macon at the Georgia Farm Bureau Headquarters.

Dr. Dennis Hancock, Extension Forage Specialist at the University of Georgia, says "this is a MUST for anyone who is serious about making and selling good quality hay." According to Hancock, "this training is rather unique in the Southeast. It is essentially the only opportunity for those who are serious about commercial hay production to get an A to Z coverage of the subject."

Learning for Life

Agriculture and Natural Resources · Family and Consumer Sciences · 4-H Youth

[ugaextension.com](http://ugaextension.com)

An Equal Opportunity / Affirmative Action Institution

This year's Southeast Hay Convention (formerly known as the Hay Production School) is the fourth annual event. Last year, over 150 participants came from six states and as far away as Puerto Rico and Canada to participate. Demand for this year's event is sure to be high again.

The 2011 Southeast Hay Convention begins at 8:00 a.m. on March 29 and will include two days of learning and interacting with fellow hay producers and University Specialists. The registration fee for this year's event is \$125 per person (\$50 for each extra person from the same farm). The registration fee covers the Southeast Hay Convention notebook, a weed identification book, and many other reference materials. Lunch on both days is also included in the registration fee.

More information about the Southeast Hay Convention can be accessed online via the University of Georgia's forage management webpage ([www.georgiaforages.com](http://www.georgiaforages.com)). Registration can be printed and mailed in with the payment, or it can be completed on-line with a credit or debit card. Of course, more information about this program can also be received by getting in contact with your local University of Georgia Cooperative Extension office at 1-800-ASK-UGA1



Fields are looking purplish due to the abundance of **Henbit** (*Lamium amplexicaule*) blooming now. Henbit is a winter annual and shouldn't cause us much of a problem unless it's very thick in small grains  
It's widespread, occurring in South America, Europe, Africa, Asia and Australia as well as most of our continent

## Proposed Federal Budget Cuts Threaten U.S. Food Supply

J. Scott Angle, Dean and Director, College of Agricultural and Environmental Sciences  
University of Georgia

Not since the Great Depression have Americans been so concerned about food security in this country. At the same time, demand for more and better food to feed the hungry around the world is exploding.

U.S. agriculture, and especially agriculture in the Southeast, is prepared to ramp up production to meet the demand. Exports are at an all-time high.

Yet, devastating funding cuts from state legislatures across the nation over the past two years have threatened our ability to develop better crops, advance food safety and improve packaging and shipping technology.

Earlier this week, the U.S. House Appropriations Committee released proposed cuts to agriculture that, if passed, will endanger the U.S. food system.

### Food and shelter

Nothing is more important to Americans than keeping a roof over their heads and food on their dinner tables. In the proposed Continuing Resolution that will determine budgets for the remainder of the 2011 calendar year, Housing and Urban Development and the U.S. Department of Agriculture are asked to shoulder disproportionate cuts.

The resolution would cut \$5.21 billion, or 22.4 percent, from agriculture-related programs and operating budgets during the remaining seven months of FY-2011. This is more than double the 10.3 percent cut proposed in overall non-defense discretionary spending.

The burgeoning federal deficit must be brought under control. Few Americans disagree. Getting the deficit under control means all departments of the federal government must tighten up. However, necessary cuts should be shared equally among all areas of federal government and ensure the least amount of damage to the American way of life.

These proposed cuts would mean massive job losses, weaken our food supply, damage our research and education system and keep agriculture from helping grow the U.S. economy.

These cuts could eliminate close to \$6 million from the University of Georgia College of Agricultural and Environmental Sciences alone. Land-grant universities across the country will face similar cuts.

The U.S. agriculture industry relies on the land-grant university system to provide research, development and training shared equally and openly among producers. Unlike other industries that employ proprietary research and development organizations, this public system of research and education was designed to give all involved in producing our nation's food supply equal access to innovations that help feed the nation and protect the environment.

### Impact at home

These are funds we rely on to conduct vital research in crop development, environmentally sound practices, water protection and food safety. These funds provide needed local education to agriculture producers, nutrition information for families and 4-H programs for more than 160,000 Georgia youths.

Learning for Life

Agriculture and Natural Resources · Family and Consumer Sciences · 4-H Youth

[ugaextension.com](http://ugaextension.com)

An Equal Opportunity / Affirmative Action Institution

Coupled with the 24-percent cut in state funds we have faced over the past two years and a proposed additional 4 percent state funding cut in July, this 10 percent cut in federal funds will further cripple our research and Extension programs to Georgia.

In Georgia, the agriculture sector of the economy has been a stabilizing force amid a stormy economic outlook. Exports are strong. Demand and prices are high. We must be positioned to meet the demand and capitalize on this economic opportunity.

Every federal agency should do their fair share of belt tightening to rein in the deficit. We are willing to do our fair share. But exacting a 22 percent cut on programs that make up just 2 percent of the federal budget is far from fair.

*(J. Scott Angle is Dean and Director of the University of Georgia College of Agricultural and Environmental Sciences.)*

## **The Georgia Automated Environmental Monitoring Network**

### ***Current Status and Future of the Georgia Automated Environmental Monitoring Network***

The University of Georgia has developed an extensive network of automated weather stations across the State of Georgia known as the Georgia Automated Environmental Monitoring Network (AEMN). The AEMN will no longer be operating after July 1, 2011 due to budget limitations and personnel changes.

The AEMN has provided current and historical information at *no cost* for almost twenty years to a variety of users. The operation of the AEMN requires over **\$300,000** annually which has traditionally been provided from a combination of state funding and contracts and grants which are no longer available due to the loss of state funding and key personnel. Continued operation of the AEMN beyond July 1, 2011 will be possible only if sustained recurrent financial support totaling \$300,000 is obtained from one or a few major sources. System funding from small contributions of \$2-3000 each or small fees from thousands of users is unpredictable, insufficient, and presents an enormous logistical management challenge which is unsuitable for funding such a complex and extensive network. Although technically “automated,” the AEMN requires 24/7 support, including staff who travel around the state diagnosing data interruptions, repairing or replacing equipment, and providing routine maintenance. One staff position is dedicated to continuously providing quality assurance and quality control of the formidable data stream from 81 stations recording at least 19 weather variables every 15 minutes. Computer and file maintenance, sensor calibration, accommodation of data requests, and overall administration require additional staff.

**Consequently, unless \$300,000 per year in ongoing support becomes available from one or a few major sources in the very near future, we will begin to dismantle individual AEMN stations on April 15, 2011.** Once a station is shut down data will no longer be available, to the detriment of Georgia’s economy. For further information please contact AEMN manager Ian Flitcroft at [iflitcro@uga.edu](mailto:iflitcro@uga.edu).

Learning for Life

Agriculture and Natural Resources · Family and Consumer Sciences · 4-H Youth

[ugaextension.com](http://ugaextension.com)

An Equal Opportunity / Affirmative Action Institution



Mayhaws and pears and many more trees are now beginning to bloom and weather warms and we've had plenty of cold vernalization. This honeybee this morning was getting some nectar and pollen from the mayhaw blooms.

## **Possible Nematicide Shortage Eminent**

Bob Kemerait, UGA Extension Plant Pathologist

The nematicide Temik may be limited this year.

Bayer CropScience, maker of Temik 15G, is trying to put a re-vamped production facility in West Virginia back on line. The basic ingredients for Temik are made at this facility. Residents in the area around the plant have filed a law suit to keep the production facility closed based upon their concern for their own safety. A judge was expected to rule on this lawsuit on 25 February, ,today.

Here's today's news on the subject from Bayer.

**“A temporary restraining order affecting the production of a key intermediate used in the production of Sevin® brand carbaryl and Temik® brand aldicarb insecticides has been extended until March 28, to allow the court more time to consider its decision”**

Assuming the judge rules in favor of re-opening the plant, the supply of Temik should not be too affected; however DO NOT expect to find the "corn cob" Temik formulation this year, only the "gypsum" formulation. Apparently the Gypsum formulation is more quickly produced.....

If the judge rules AGAINST re-opening the plant, then our producers who rely upon Temik 15G will be in a world of hurt and the ONLY Temik will be that already in distribution.

Hopefully we will have Temik in 2011, but if the worst does occur; below are options for growers:

## Peanuts:

1. Tifguard variety- nearly immune to peanut root-knot nematodes!
2. Telone II fumigant + Thimet/phorate for thrips control.
3. NemOut biological nematicide- I have interesting results, but they are preliminary and NemOut is in no way a "Temik" product. Still, it could be useful in this situation for some growers; however the overall efficacy of this product still remains to be determined..
4. Enclosure- iprodione is a fungicide and is now available to peanut growers as a nematicide; Dr. Brenneman and I have only preliminary data and the overall efficacy against nematodes affecting peanuts is in question for now. The overall efficacy of this product remains to be proven.

## Cotton:

1. PHY 367 WRF and ST 5458 varieties have partial resistance to southern root-knot nematodes but NOT to Reniform or Columbia lance. Planting these varieties in a root-knot field will compliment other management strategies.
2. Telone II fumigant + a seed treatment insecticide for thrips control- outstanding control of nematodes.
3. Seed treatment nematicides AVICTA Complete Cotton and AERIS Seed-applied System- both offer some control of nematodes, especially in the current situation. While not complete replacements for Temik 15G, they do offer control of nematodes where populations are less damaging. ACCORDING to BAYER CROPSCIENCE and SYNGENTA- there is plenty of each product available but time is needed to treat large volumes of seed...
4. Where growers do not use Telone II, but need more than just a seed treatment nematicide, there is the additional option to apply Vydate CLV, 17.0 fl oz/A, to the cotton between the 5th and 7th true leaf stage to compliment the seed treatments. Thus has not been always successful in Georgia; however given our current situation.....

## Soybeans

1. Select soybean varieties with resistance to Cyst, root-knot, and reniform nematodes where available.
2. Consider use of Telone II,
3. Consider use of AVICTA Complete Bean (like AVICTA Complete Cotton) from Syngenta

## UGA Cotton Variety Performance Calculator

### Guy Collins and Jared Whitaker, UGA Extension Crop Scientists

To assist in variety selection, the UGA Cotton Variety Performance Calculator has been updated to include all trials which have been conducted in 2009 and 2010. This calculator can be found on the UGA Cotton Webpage ([www.ugacotton.com](http://www.ugacotton.com)).

Learning for Life

Agriculture and Natural Resources · Family and Consumer Sciences · 4-H Youth

[ugaextension.com](http://ugaextension.com)

An Equal Opportunity / Affirmative Action Institution

## Question Of The Week

The last question was concerning a photo I took and it was a closeup of a Sweetgum Ball from the fruiting structure of the Sweetgum tree..

This week's question is ,what made this track down near a fish pond in the wet sand and why was it there?



Later,  
Rome

Rome Ethredge  
Seminole County Extension Agent