



Seminole County Extension
207 E. Crawford St.
Donalsonville, Ga 39845

Phone: (229) 524-2326
Fax: (229) 524-2856
E-mail: ethredge@uga.edu

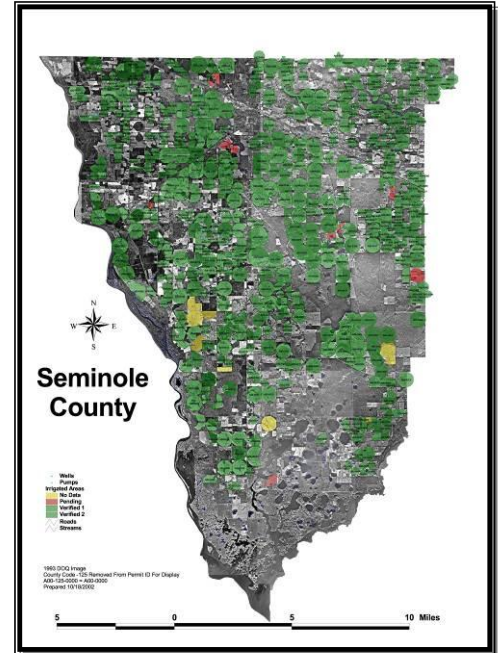
<http://www.ugaextension.com/seminole>

Seminole Crop E News

2-4-11

Farmers and Agribusiness,

Warmer temperatures and some rain were very welcome this week. You can almost see the small grains growing, especially that which was sidedressed recently. Weed control is critical as soon as it dries out some and temperatures moderate. Fields should be scouted for weeds, especially look in wheat fields for ryegrass and control it quickly. Here below you can see the shiny ryegrass in my hand with wheat growing behind it. In some cases it's limited to field borders and a swath sprayed around the ends and waterways will do a lot of good.



Learning for Life

Agriculture and Natural Resources · Family and Consumer Sciences · 4-H Youth

ugaextension.com

An Equal Opportunity / Affirmative Action Institution



Wild Radish or wild mustard is a big problem in small grains as well now and controls to use depend on the wheat tillering. Most wheat I've been looking at is not fully tillered at this point.



These 3 weeds are seen in small grains now as well and aren't as problematic as the top 2 above. Henbit on the left then swinecress in the middle and chickweed on the bottom.



Learning for Life

Agriculture and Natural Resources · Family and Consumer Sciences · 4-H Youth

ugaextension.com

An Equal Opportunity / Affirmative Action Institution



A burned off pasture had a slew of thistle in it, but it can be controlled now much more economically while in the rosette growth stage, so pastures should be scouted for it now .



Cold Winter

Pam Knox, Assistant state climatologist and an engineering program coordinator in the University of Georgia College of Agricultural and Environmental Sciences had the following to say in an article on FACES this week.

“If colder-than-normal temperatures continue into February, this winter could possibly set records for the coldest winter ever in some parts of Georgia. Record low temperatures were set at Macon, Savannah and Alma Jan. 14. Macon reported 16 degrees, breaking the old record of 19 degrees set that date in 1970. Savannah and Alma reported 18 degrees, surpassing the old records of 20 degrees set at both locations in 1964.

Dry conditions from December continued into January, leading to an increase in the severity and expanse of drought across Georgia. The only area that was above average in rainfall was a small area in far southeast Georgia.”

Click here to go to the full article.

http://georgiafaces.caes.uga.edu/?public=viewStory&pk_id=4022

Learning for Life

Agriculture and Natural Resources · Family and Consumer Sciences · 4-H Youth

ugaextension.com

An Equal Opportunity / Affirmative Action Institution

4H Project Achievement



4Her's from our district gathered at Rock Eagle Camp this past weekend to give Illustrated talks and show their talent in many categories. Seminole County was represented well with projects ranging from Entomology to History to Pork Production. The young people are also judged on a whole years work in their chosen project. We're fortunate to send 4 students on to state competition later this year.

Corn Meeting

Corn Production Meeting on Thursday of this week at the Donalsonville Lions Hall from 11 am to 1:15pm. Speakers will be Dr Dewey Lee, UGA Extension Grains Scientist, Dr. Bob Kemerait, UGA Extension Plant Pathologist, and Rad Yager, UGA Extension, Irrigation Call 524-2326 so we can plan for the meal.

Cotton Varieties

Dr. Guy Collins, UGA Extension Crop Scientist, gives us the following summary of cotton variety information from the official variety trials. He'll present a more comprehensive looks at varieties when he comes to speak at our cotton meeting here on Feb 24.

Learning for Life

Agriculture and Natural Resources · Family and Consumer Sciences · 4-H Youth

ugaextension.com

An Equal Opportunity / Affirmative Action Institution

2010 GA Cotton OVT – Irrigated

– Top 15 Varieties (Bainbridge, Midville, Plains, Tifton)

<u>Early Varieties</u>	<u>Lint Yield</u>	<u>Late Varieties</u>	<u>Lint Yield</u>
PHY 499 WRF	1824	PHY 499 WRF	1608
DP 0912 B2RF	1761	DP 1034 B2RF	1621
DP 1028 B2RF	1695	DP 1050 B2RF	1597
DP 0924 B2RF	1673	PHY 375 WRF	1596
DP 1032 B2RF	1655	10R052B2R2	1586
FM 1740 B2F	1655	PHY 565 WRF	1584
DG 2570 B2RF	1628	DP 1048 B2RF	1570
AM 1550 B2RF	1621	09R619B2R2	1567
DP 0920 B2RF	1609	DP 0949B2RF	1562
NG 3331 B2RF	1597	09R555B2R2	1547
PHY 375 WRF	1593	DP 1032 B2RF	1507
PHY 367 WRF	1584	PHY 569 WRF	1506
CG 3220 B2RF	1573	PHY 519 WRF	1503
CG 3035 RF	1559	AM 1550 B2RF	1503
ST 4288B2F	1551	ST 5458 B2RF	1498

2010 GA Cotton OVT – Dryland

– Top 15 Varieties (Midville, Plains, Tifton)

<u>Early Varieties</u>	<u>Lint Yield</u>	<u>Late Varieties</u>	<u>Lint Yield</u>
PHY 499 WRF	1036	PHY 499 WRF	1024
DP 0912 B2RF	983	DP 1050 B2RF	945
DP 1028 B2RF	907	DP 1048 B2RF	915
CG 3035 RF	866	DP 0949 B2RF	907
PHY 375 WRF	865	PHY 519 WRF	904
All-Tex LA122	861	DP 0935 B2RF	892
FM 1740 B2RF	843	09R619B2R2	879
DP 1032 B2RF	842	DP 1034 B2RF	854
DP 0920 B2RF	810	AM 1550 B2RF	852
PHY 367 WRF	810	09R555B2R2	844
DG 2570 B2RF	794	ST 5288 B2F	837
NG 3331 B2RF	787	FM 1740 B2RF	825
All-Tex A102	786	ST 5458 B2RF	810
DP 0924 B2RF	776	DP 1032 B2RF	803
CG 3220 B2RF	764	10R052B2R2	786

Ag Economics

2011 January Update of the Crop Comparison Tool has been posted. It contains the 24 price comparison charts. Also Excel files are available here as well that you can change around with your prices and yields. Thanks to UGA Extension Ag Economists.

You can find it online at: <http://www.caes.uga.edu/?tiny=JLBBTR>

Here's an example of one a farmer and I did this morning to help him decide on his crop mix for this year. A lot needs to go into these decisions besides just the crop price. A few things to consider are rotational concerns and needs, spreading risk (what if it's a phenomenal corn year, or peanut year, or cotton year? and you planted very little), weed concerns (problem weeds may be easier to control in a certain crop), other pest concerns (nematodes), cash flow, labor needs and timing, input costs and logistics, harvest concerns, possibilities for double cropping (soybeans behind corn, etc), irrigation limitations and finally equipment limitations.

SUMMARY OF 2011 SOUTH GEORGIA CROP ENTERPRISE ESTIMATES

By A.R. Smith, N.B. Smith and W.D. Shurley, UGA Extension Economists, Department of Agricultural & Applied Economics

Updated January 2011

Conventional Tillage	IRRIGATED							NON-IRRIGATED						
	Cotton	Peanuts	Corn	RR Soybeans	Grain Sorghum	Int Mgmt Wheat		Cotton	Peanuts	RR Corn	RR Soybeans	Grain Sorghum	Wheat	
EXPECTED YIELD	1,250	5,000	215	55	100	75		700	2,800	85	30	65	55	
EXPECTED SEASON AVG PRICE	\$1.14	\$595	\$6.30	\$12.50	\$5.92	\$6.50		\$1.14	\$595	\$6.30	\$12.50	\$5.92	\$6.50	
GROSS RETURN	\$1,425	\$1,488	\$1,355	\$688	\$592	\$488		\$798	\$833	\$536	\$375	\$385	\$358	
VARIABLE COSTS														
Seed	78	105	90	50	15	45		78	105	53	51	7	30	
BWEP	1.64							0.92						
Fertilizer & Lime*	134	52	254	72	125	133		103	52	116	72	107	94	
Chicken Litter														
Chemicals	81	178	16	67	15	41		77	151	16	37	15	16	
Custom Application/Hand Weeding														
Scouting	10							10						
Fuel and Lube**	38	64	21	20	21	28		37	64	21	20	21	15	
Repairs and Maintenance	22	44	15	13	14	15		23	44	15	13	14	8	
Irrigation***	83	62	83	52	36			25	34	11	10	11	7	
Labor	26	34	11	10	11	13		27	35	19	16	13	9	
Insurance	16	28	14	15	19	10								
Land Rent														
Other														
Interest on Operating Capital	16	18	16	10	8	9		12	16	8	7	6	6	
Gin & Warehouse (net after cottonseed)	34							19						
Drying and Cleaning		60	66		31	6			34	26		20	5	
Marketing and Fees		16							9					
TOTAL VARIABLE COSTS	\$541	\$660	\$586	\$309	\$295	\$299		\$412	\$542	\$285	\$226	\$214	\$189	
RETURN ABOVE VARIABLE COST	\$884	\$827	\$768	\$379	\$297	\$189		\$386	\$291	\$251	\$149	\$171	\$168	
BREAKEVEN PRICE	\$0.43	\$264	\$2.73	\$5.61	\$2.95	\$3.99		\$0.59	\$387	\$3.35	\$7.55	\$3.29	\$3.44	
FIXED COSTS														
Machinery and Equipment	99	131	50	47	49	52		99	131	50	47	49	32	
Irrigation	110	110	110	110	110									
Buildings														
Miscellaneous Overhead	27	33	29	15	15	15		21	27	14	11	11	9	
TOTAL SPECIFIED FIXED COSTS	\$236	\$274	\$189	\$172	\$174	\$67		\$120	\$158	\$64	\$58	\$60	\$41	
TOTAL COST EXCL. LAND & MGT	\$777	\$935	\$776	\$481	\$469	\$366		\$532	\$701	\$349	\$285	\$274	\$231	
RETURN TO LAND AND MGT	\$648	\$553	\$579	\$207	\$123	\$122		\$266	\$132	\$186	\$90	\$111	\$127	
*****EXCEL® TEMPLATE MAY BE MODIFIED BY THE USER.*****														
BREAKEVEN PRICE (Total Costs)	\$0.62	\$374	\$3.61	\$8.74	\$4.69	\$4.88		\$0.76	\$500	\$4.11	\$9.49	\$4.21	\$4.19	
BREAKEVEN YIELD	682	3,142	123	38	79	56		467	2,355	55	23	46	35	

* Expected fertilizer \$/lb. of nutrient are as follows: N= \$0.60 P= \$0.45 K= \$0.50

** Diesel fuel price of: \$3.00 per Gallon

*** Average of diesel and electric irrigation application costs. Electric is estimated at \$7/appl and diesel is estimated at \$13.25/appl when diesel cost \$3/gal.

Question of the Week

We know from the old song that “Mares eat oats and Does eat oats” but in the photo last week we had where something had dug up some oats and it looked like they were getting at the peanuts left over from last season.

The farmer says it was does eating the oats and digging for peanuts, as he often sees a herd of 25 deer in this area of his field but it looks more like wild hog damage as you can see the peanuts dug up from last season’s peanut crop. I think hogs can smell a peanut a mile down and root it up.

This week’s question, What’s Lothario up to now? Is this a joyride or what?



Later,
Rome

Rome Ethredge
Seminole County Extension Agent