



Seminole County Extension
207 E. Crawford St.
Donalsonville, Ga 39845

Phone: (229) 524-2326
Fax: (229) 524-2856
E-mail: ethredge@uga.edu

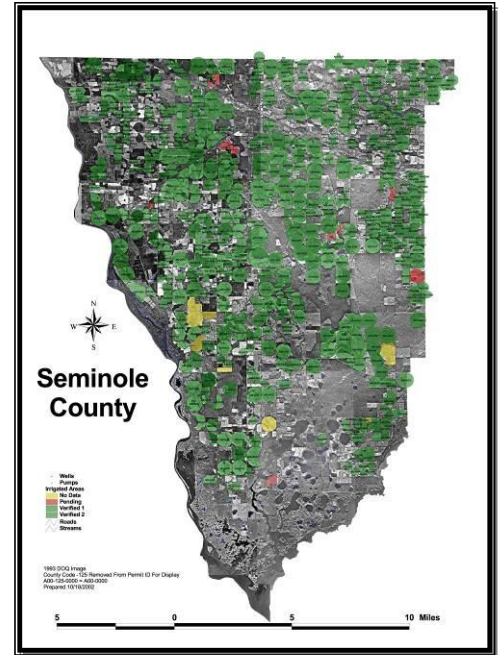
<http://www.ugaextension.com/seminole>

Seminole Crop E News

March 20, 2011

Farmers and Agribusiness,

Corn planting is really happening this week with some up. On the left below is some very early planted corn that turned very yellow after going through some cold temperatures. On the right is some corn just coming up that should really go with these warmer temperatures.



Learning for Life

Agriculture and Natural Resources · Family and Consumer Sciences · 4-H Youth

ugaextension.com

An Equal Opportunity / Affirmative Action Institution



Here's Jeremy Roberts planting some twin row corn (8 inch on 36 inch centers), so that's a 24 row planter, whose main purpose is peanut planting but it does a good job with corn as well. Here's a link to a video of it. <http://www.youtube.com/user/rethredge?feature=mhum>



Aerial Applicator Fly-in was held here this week, with a good turnout by Ag pilots. UGA Extension Engineer Paul Sumner evaluated spray swath and consistency and droplet deposition.

Here's a video of a couple of them flying over the test area. <http://www.youtube.com/watch?v=LVyNN0C1exY>

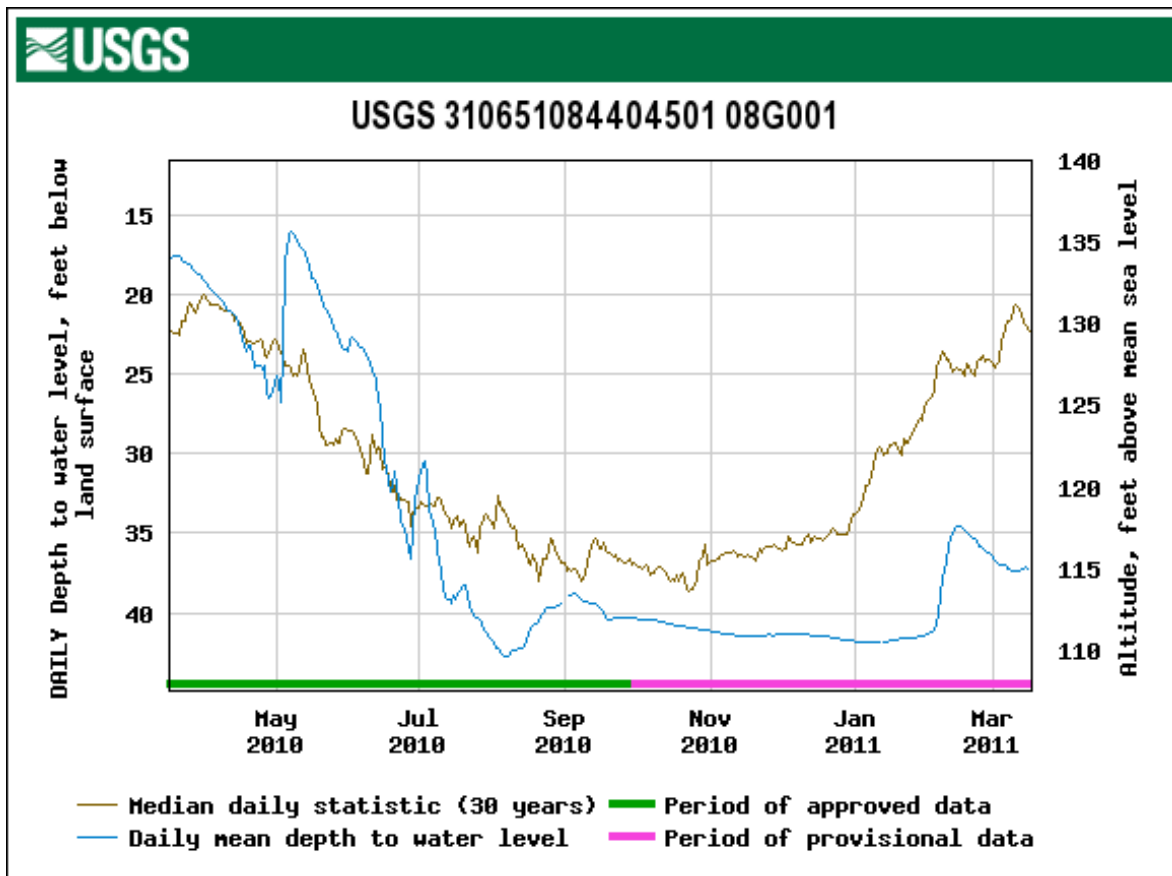
Eastern Tent Caterpillars have emerged. Here's Dee Broome with hundreds of them on one of his wild cherry trees. They were defoliating it pretty well. Here's a link below to a UGA publication that tells all about it.



<http://apps.caes.uga.edu/urbanag/Home&Garden/indexFS.cfm?storyid=2659>



Tommy Lynn and Dee Broome were checking the flow on a well this week. Things are ok now but we need rainfall to raise aquifer levels.



Groundwater Levels Low

It's 37 feet down to the water in a nearby test well. Normally this time of year (see gold line in chart) it's only 22 feet down. A few good rains can change this quickly but we're in need of some rainfall. The blue line above is our groundwater record for this past year, we've been lower than the 30 year average since the record hot summer we had.

Learning for Life

Agriculture and Natural Resources · Family and Consumer Sciences · 4-H Youth

ugaextension.com

An Equal Opportunity / Affirmative Action Institution

Bayer CropScience announces decision not to resume MIC production

RESEARCH TRIANGLE PARK, N.C. (March 18, 2011) — Bayer CropScience today announced that the company has decided not to restart the transitional production of methyl isocyanate (MIC) at its site in Institute, West Virginia. As a result, the company will move forward immediately with decommissioning of the reconfigured MIC and associated production units as well as the closure of Woodbine....

However, against the background of the continuing uncertainty regarding the timing of resumption of production, the company needed to make a decision.

“This was a very difficult decision, particularly as our employees did everything possible to ensure the operational safety of our newly constructed MIC unit during the remaining production period”, said Achim Noack, member of the Board of Management of Bayer CropScience. “Our business case was based on our ability to supply the market needs beginning in 2011, and with the recent delays, that plan is no longer economically viable.”

Following a 2010 agreement with the U.S. Environmental Protection Agency, Bayer CropScience agreed to phase-out Temik® and had timed production to end in 2012, to allow for an orderly market exit and meet immediate customer needs. This basic conclusion was based on a number of factors, with both strategic and economic considerations, and is fully in line with Bayer CropScience’s global strategy to focus on delivering innovative solutions to modern agriculture and replacing older compounds in its portfolio, including WHO Class I products.

“We regret that the decision taken today to not restart production of MIC will not allow farmers access to Temik®,” said Bill Buckner, President and CEO of Bayer CropScience in the United States.



Question of the Week

The fruit in question last week was Mayhaw, pomegranate was the most common wrong answer. This week I saw these “pterodactyl” tracks in a corn field. They were big. What are they really?

Later,
Rome

Rome Ethredge
Seminole County Extension Agent

Learning for Life

Natural Resources · Family and Consumer Sciences · 4-H Youth
ugaextension.com

An Equal Opportunity / Affirmative Action Institution