



THE UNIVERSITY OF GEORGIA
COOPERATIVE EXTENSION
Colleges of Agricultural and Environmental Sciences & Family and Consumer Sciences

Seminole County Extension
207 E. Crawford St.
Donalsonville, Ga 39845

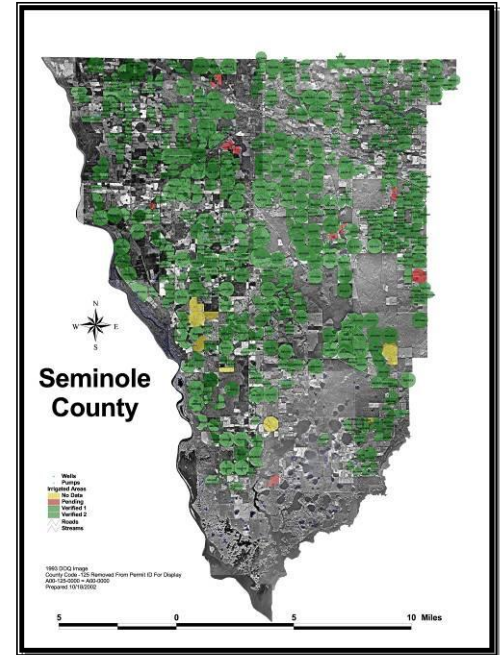
Phone: (229) 524-2326
Fax: (229) 524-2856
E-mail: ethredge@uga.edu
<http://www.ugaextension.com/seminole>

Seminole Crop E News

April 27, 2011

Farmers and Agribusiness,

There's lots going on down on the farm, with peanut planting, corn fertilizing and weed control and cotton planting and preparation for planting and lots of irrigating. Some fields have been irrigated 3 times and a crop still hasn't been planted. (They were irrigated to prepare ground for planting.) We have been fortunate in spots to catch a few showers, like the field below where they got enough rain to plant peanuts on Tuesday.



Learning for Life



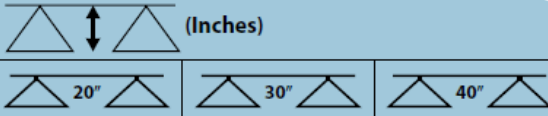
Agriculture and Natural Resources · Family and Consumer Sciences · 4-H Youth

ugaextension.com

An Equal Opportunity / Affirmative Action Institution

Suggested Minimum Spray Heights

The nozzle height suggestions in the table below are based on the minimum overlap required to obtain uniform distribution. However, in many cases, typical height adjustments are based on a 1 to 1 nozzle spacing to height ratio. For example, 110° flat spray tips spaced 20 inches apart are commonly set 20 inches above the target.

		 (Inches)		
		20"	30"	40"
TP, TJ	65°	22–24"	33–35"	NR*
TP, XR, TX, DG, TJ, AI, XRC	80°	17–19"	26–28"	NR*
TP, XR, DG, TT, TTI, TJ, DGTJ, AI, AIXR, AIC, XRC, TTJ, AITTJ	110°	16–18"	20–22"	NR*
FullJet®	120°	10–18"***	14–18"***	14–18"***
FloodJet® TK, TF, K, QCK, QCTF, 1/4TTJ	120°	14–16"***	15–17"***	18–20"***

* Not recommended.

** Nozzle height based on 30° to 45° angle of orientation (see page 24 of catalog).

*** Wide angle spray tip height is influenced by nozzle orientation. The critical factor is to achieve a double spray pattern overlap.

Herbicide drift onto corn seen this week..



Cotton Scout Schools: Cotton insect scouting schools are annually held at various locations in Georgia. These programs offer basic information on cotton insects and scouting procedures and will serve as a review for experienced scouts and producers and as an introduction to cotton insect monitoring for new scouts.

Location	City	Date	Time	Contact for additional information
Tifton Campus Conference Center	Tifton GA	June 13, 2011	9:00 am -12:30pm	Debbie Rutland (229) 386-3424
Southeast Research and Education Center	Midville GA	June 21, 2011	9:00 am -12:30pm	Peyton Sapp (706) 554-2119



We took an interesting tour of the swamps below New Orleans last week.

If you want to see this 12 foot wild Louisiana swamp gator be kissed, go to this video we shot. You can see here that he has teeth as he snacks on a full sized marshmallow. You know what the bad thing is? I felt safer and more at home in the swamp than on Bourbon Street.

<http://www.youtube.com/user/rethredge?feature=mhum>

Snap beans are liking the warm weather and irrigation. They'll make and then we'll plant cotton behind them.





Wheat is progressing well and we're looking at a good crop I believe. We usually do well with wheat when we have a dry spring.



James Hadden and Bryan Baxley with Syngenta, came out to look at some of their company's corn with me. They're researching fungicide applications for disease control and plant health. We found no disease in this field and hopefully we won't see any for a while. Last year was probably the worst Southern Rust year we've had but farmers still had extremely good yields where it was controlled.

Learning for Life

Agriculture and Natural Resources · Family and Consumer Sciences · 4-H Youth

ugaextension.com

An Equal Opportunity / Affirmative Action Institution

Question of the Week

Last week's question concerned our state reptile's feet, he is a tortoise and his feet were made for digging not swimming like the aquatic turtles.

I was called out to identify and suggest controls for this pond weed this week. What aquatic weed is this and how is it different from most other weeds?

Bonus question: We noticed that Easter came late this year. How is the date for Easter determined?



Later,
Rome

Rome Ethredge
Seminole County Extension Agent