



THE UNIVERSITY OF GEORGIA  
**COOPERATIVE EXTENSION**  
Colleges of Agricultural and Environmental Sciences & Family and Consumer Sciences

Seminole County Extension  
207 E. Crawford St.  
Donalsonville, Ga 39845

Phone: (229) 524-2326  
Fax: (229) 524-2856  
E-mail: [ethredge@uga.edu](mailto:ethredge@uga.edu)

<http://www.ugaextension.com/seminole>

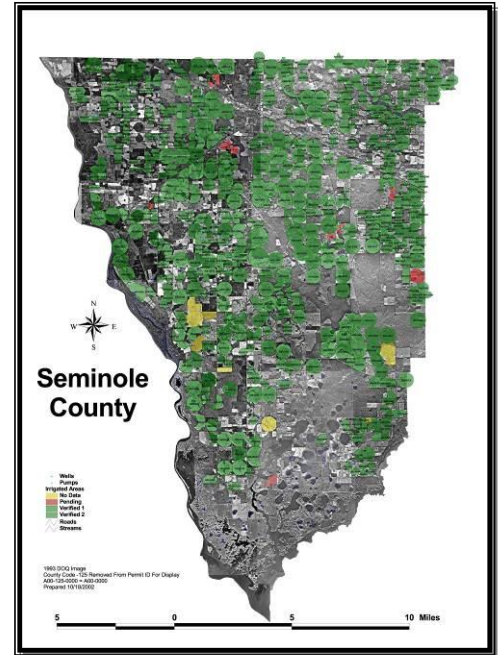
## Seminole Crop E news

July 30, 2010

Farmers and Agribusiness,

High heat is drying corn on down but is drying everything else down as well. Corn harvest is moving along well.

Consultant Rob Cohen is here with some young cotton he's scouting. He says he's thankful the insect pressure on cotton so far this year hasn't been as bad as last year and the aphids have pretty much crashed everywhere. He said irrigation systems have run overtime here lately but you can tell a difference where cotton has been well watered.



Learning for Life

Agriculture and Natural Resources · Family and Consumer Sciences · 4-H Youth

[ugaextension.com](http://ugaextension.com)

An Equal Opportunity / Affirmative Action Institution

## Wick bar chemical labeled

Dr. Eric Prostko, UGA Extension Weed science

On July 27, 2010, the GA Dept. of Agriculture granted a Section 24(c) SLN label for the use of Gramoxone Inteon in non-selective applicators for use in **peanut**. This label does not include cotton or soybean. I have attached a copy of the label to this e-mail.

A couple of comments:

- 1) I view the use of non-selective applicators as a last resort in the management of Palmer amaranth. The UGA Weed Science Group would strongly urge our growers to use other control strategies such as tillage, cover crops, residual herbicides, and timely POST applications.
- 2) At this point in time, I have had the opportunity to evaluate 3 different types of applicators. The one that has performed the best so far has been the GrassWorks WeedWiper (<http://www.weedproblems.com/>). I have also looked at the WickMaster (<http://wickbar.com/>) and the "traditional" gravity flow rope-wick (<http://www.tifton.uga.edu/eng/Publications/Rope/Aavim%20how%20to%20make%20a%20rope%20wick.pdf>). In the future, I will also be evaluating the Sponge WeedWiper (<https://www.spongeweedwiper.com>) and another type of unit made by LMC/Cross in Albany/Donalsonville, GA (<http://www.crossequipmentlmc.com/index.html>)
- 3) In order for non-selective applicators to be effective in reducing Palmer amaranth seed production, treatments will have to be applied within 2 weeks of pollen formation (i.e. before viable seed are formed).



Tomato Spotted Wilt Virus is pretty rare these days with our new peanut varieties and production practices. You can still find a few hits in most fields if you search for them, however like the one above in some GA 07W peanuts. This Ga 07W has white mold resistance and I didn't see any of that out there.



## Cotton Leaf Spot

Consultant Eric Cohen found some pretty bad cotton leaf spot this week . It turned out to be *Cercospora* and was in northwestern Decatur County. Decatur County agent Mitchell May and I checked it out and found a good bit of leaf drop going on as well. We're not sure of the effects of a fungicide on this. Some reports say we won't get much affect. We're running a trial here in collaboration with Dr. Bob Kemerait, UGA Extension Plant Pathology, to see if we get some control. Other scouts in our area report finding leafspots in some areas and certain fields. We still haven't isolated any *Corynespora* leafspot , like we had problems with last year.

## Deep South Stocker Conference

The second annual "Deep South Stocker Conference" will be held at the Sunbelt Expo in Moultrie, GA on August 12th and 13<sup>th</sup>. This conference is a joint effort between the University of Georgia Cooperative Extension Service, the Mississippi State University Extension Service, and the Alabama Cooperative Extension System.

Below is a link to the website with all the information. The conference will consist of education seminars and demonstrations on Thursday and tours on Friday. We will also have a tradeshow set up on Thursday. To help get our producers and other interested to go ahead and sign up, we're giving away fishing style shirts with the conference logo on them to the first 50 to register.

[www.DeepSouthStocker.com](http://www.DeepSouthStocker.com)

Learning for Life

Agriculture and Natural Resources · Family and Consumer Sciences · 4-H Youth

[ugaextension.com](http://ugaextension.com)

An Equal Opportunity / Affirmative Action Institution

## **Agriculture... Leadership**

Jimmy Hill with Georgia Agri-Leaders Forum Foundation

William Jennings Bryan said it best, "Burn down your cities and leave our farms, and your cities will spring up again as if by magic. But destroy our farms and the grass will grow in the streets of every city in the country." Those who grew up on the farm or are maybe one generation removed from the farm, comprehend this statement. A farmer friend of mine has adopted a slogan that reads, "We farm, you eat". Today, in addition to providing food, farmers provide clothing, shelter and now fuel. So it has become obvious that we are all truly impacted by agriculture on a daily basis.

Click the following link to read more at the new **Growing Georgia** web site.

[Read More](#)



Some corn was blown down due to storms that came through this week. The combine may have to run one way through the field in order to pick it up. They plan to shell it tomorrow. Reports of 18 to 19% grain moisture in many fields, has some shelling going on.

### **Jackson County Florida Peanut Field Day**

August 19, Registration begins at 8:00 AM central time - Field Tours begin at 8:30 AM; topics include variety tests, disease and pest control; contact Barry Tillman, at 850-394-9124, for more information, at the North Florida Research and Education Center - Marianna, located on Hwy 71

Topics to be addressed include disease and nematode control, new varieties, crop rotation and weed control.

Learning for Life

Agriculture and Natural Resources · Family and Consumer Sciences · 4-H Youth

[ugaextension.com](http://ugaextension.com)

An Equal Opportunity / Affirmative Action Institution



Rickey Alday comes from a long line of good melon growers, and is here with a melon he and his 4H'er children and wife grew that weighed over 100 pounds.

### Question of the Week

Last week I had a photo of peanuts and the deal with them was that they had been subject to some pretty heavy caterpillar feeding and were sprayed to control the worms a few days previous to the photo and you can see new lighter colored leaf growth with no feeding on them and the old caterpillar fed on old growth below.

This week we have a weed ID question. We're seeing a good many of these weeds in corn fields that have just been harvested. What is this and is it really a weed?



Later,  
Rome

Rome Ethredge  
Seminole County Extension Agent