



# Washington County 4-H Cloverleaf Times

For 5th & 6th Graders



Washington County 4-H

Cooperative Extension

158 West Haynes Street

PO Box 310

Sandersville, GA 31082

Phone: (478) 552-2011

Fax: (478) 552-3042

Visit us on the Web:

<http://www.ugaextension.com/washington>

Washington County

Extension Staff:

Joann Milam, CEC

Cindy Sheram, CEA

Sidney Law, CEA

Kim Jackson, Archway

Laura Bland, Archway Public Health

Judy Phillips, EFNEP PA

Beverly Waller, Secretary



Washington County Cooperative Extension offers its educational programs, assistance, and materials to all people regardless of race, ethnicity, national origin, color, sex, sexual orientation, religion, age, disability, or veteran status and is an equal opportunity, affirmative action organization.

**Learning for Life**

September

2011

## Cloverleaf 4-H Monthly Contests 4-H Poster Contest

### Rules:

1. Participants will develop posters that creatively promotes Georgia 4-H Week (October 2-7, 2011). The Theme is:  
**I Am Georgia 4-H!**
2. All posters must relate to 4-H in some way.
3. Posters must be the original work of one 4-H'er. Team entries will not be accepted.
4. Posters should be suitable for display at the Washington County Agricultural & Youth Fair.
5. All entries must be received no later than October 2, 2011.
6. The top three posters will be displayed at the Washington County Agricultural & Youth Fair October 4-8, 2011. Prizes will be awarded as follows:

First Place \$25.00

Second Place \$15.00

Third Place \$10.00



## 4-H Foundation Holiday Card Contest

Design a December holiday card for the Georgia 4-H Foundation, which will be sent to 4-H supporters at the end of the year. Top prize is \$50!

### Rules:

1. All entries must be the student's original drawing on an 8.5 x 5.5 inch (or 5.5 x 8.5 inch) sheet of white, unlined paper.
2. All entries should somehow include 4-H in the theme for the message or design. Also, please try to use a universal "holiday" theme.
3. All entries must be colorful, so they can be reproduced on the holiday card if selected as the grand prize winner.
4. Each entry must be accompanied by an official entry form filled out by the 4-H'er and signed by the county 4-H agent. See your teacher for an entry form.
5. Entries must be turned in no later than October 2, 2011



**Next Month: 4-H Project Essay Contest**



# Washington County Agricultural & Youth Fair



October 4-8, 2011

Farm Bureau Agricultural Center  
882 Grady Mertz Road in Tennille

Admission: \$3.00 Adults & Students

### Special Shows/Events

- \*Old Timey Barnyard Animal Exhibit
- \*Ride all rides with one price armband - Individual ride tickets are also available
- \*Enter your exhibits for prize \$\$\$

**Tuesday, October 4th** - Gates Open 6:00 pm  
**School Appreciation Night.** Students, teachers, and staff enter gate free with special school tickets sponsored by Citizens Bank of Washington County.

**Wednesday, October 5th** - Gates Open 6:00 pm  
Boy & Girl Scouts Night - Get in free with uniform or special tickets.

**Thursday, October 6th** - Gates Open 6:00 pm  
\*Business Appreciation Night  
\*Shooting Contest



\*Honors Night - All Honor Roll students with perfect attendance last year are eligible for a complimentary gate ticket issued by your school or teacher. Also a free ride ticket of your choice, refreshments, and etc. will be available at the Honors Reception booth for you.



**Friday, October 7th** - Gates Open 6:00 pm  
Scout (Boys and Girls) appreciation night.  
All Scouts in uniform will get in Free.

**Saturday, October 8th** - Gates Open 4:00 pm



# Farm Produce & Horticulture Exhibits



These Exhibits must be checked in at the fairgrounds on Sunday, October 2nd, between the hours of 2:00pm and 4:00pm. Only one entry per person may be made under each class, category, lot. Payment for 1st, 2nd and 3rd place winners will be made on Sunday, October 9th from 2:00pm - 4:00pm by cash and exhibits MUST be picked up at this time. Exhibits MUST remain throughout the entire week of the fair in order to receive prize money. Any unclaimed items WILL BE DISCARDED. Exhibit items will ONLY be accepted at locations and time listed above. Judging will be conducted on four points: quality, appropriateness, cleanliness and workmanship. Judging in Food preservation will be done according to: appearance, texture, uniformity, pack and container. Competent judges will be secured. Their decisions are final.

## Class I - Fruits

1. Apples	3
2. Cantaloupe	1
3. Figs	5
4. Grapes (red)	10
5. Grapes (bronze)	10
6. Pears	3
7. Pomegranates	3
8. Persimmons (domestic)	3
9. Watermelon (small)	1 (cir. 30" or less)
10. Watermelon (large)	1 (cir. 31" or more)
11. Fruit Display	2-each/5 different fruits



## Class III - Nuts

1. Chestnuts	5
2. Pecans (Stuart)	2 lbs.
3. Pecans (Seedlings)	2 lbs.
4. Pecans, (other)	2 lbs.
5. Peanuts	1 lb.

## Class IV - Ornamentals

1. Indian corn	6
2. Ornamental Corn	6
3. Gourds	6
4. Potted peppers	1 plant

## Class V - Miscellaneous

1. Cotton	1 stalk
2. Eggs	1 dozen
3. Syrup	1 quart
4. Sugar Cane	5 stalks
5. Hay	Best Bale
6. Soybeans	3 stalks

## Class VI - Horticulture

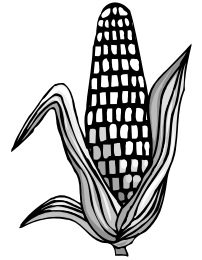
1. Potted Pansies	1 pot
2. Potted Marigolds	1 pot
3. Potted Ferns	1 pot
4. Cut Roses	1 vase

(Must be in a container with water)



## Class II - Vegetables

1. Butterbeans	1 lb.
2. Green beans	1 lb.
3. Carrots	5
4. Cabbage	1
5. Field Corn	6 ears
6. Cucumbers	3
7. Garlic	3 cloves
8. Okra	1 lb.
9. Peas	10 pods
10. Pepper (banana)	6
11. Pepper (bell)	6
12. Pepper (cayenne)	6
13. Pepper (Jalapeno)	6
14. Pepper (other)	6
15. Potatoes, Irish	3
16. Potatoes, Sweet	3
17. Squash, Winter	3
18. Squash, Summer	3
19. Pumpkin, Decorated	1 (40" or less)
20. Pumpkin, small	1 (cir. under 40")
21. Pumpkin, large	1 (cir. over 40")
22. Tomatoes, Cherry	10
23. Tomatoes, Regular	3
24. Turnips	5
25. Vegetable Display	2 each of 3 different vegetables
26. Eggplants	2



## Class VII - Wildlife Foods

1. Persimmons (wild)	at least 10
2. Crabapples	6
3. Acorns	25
4. Grain Sorghum	3 heads
5. Sunflower	2 heads
6. Cattail Millet	3 heads
7. Hickory nuts	at least 10
8. Wild Pear	6
9. Wild Grapes	20



# Family and Consumer Science

## 4-H & Youth Exhibits

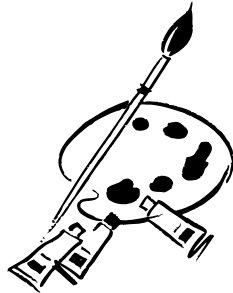


These Exhibits must be checked in at the fairgrounds on Sunday, October 2nd, between the hours of 2:00pm and 4:00pm. Only one entry per person may be made under each class, category, lot. Payment for 1st, 2nd and 3rd place winners will be made on Sunday, October 9th from 2:00pm - 4:00pm by cash and exhibits MUST be picked up at this time. Exhibits MUST remain throughout the entire week of the fair in order to receive prize money. Any unclaimed items WILL BE DISCARDED. Exhibit items will ONLY be accepted at locations and time listed above. Judging will be conducted on four points: quality, appropriateness, cleanliness and workmanship. Judging in Food preservation will be done according to: appearance, texture, uniformity, pack and container. Competent judges will be secured. Their decisions are final.

### Class I - Art

**All art work must be original and must have been done within the past year (October 2010-September 2011). Art work in frames will not be accepted. Matted artwork is acceptable (but not necessary); those pieces that are matted hang much nicer and easier. Student art exhibits must be entered through each student's school. Home school students should bring their entries to the Extension Office September 23rd during office hours.**

1. Paintings
2. Pencil - Black & White
3. Charcoals
4. Pen and Ink
5. Colored Pencil/Crayon/Marker
6. Pastels
7. Photography
8. 3-Dimensional Art



### Class II - Crafts

1. Decorative Painting
2. Christmas wreaths/arrangements
3. Other wreaths/arrangements/hand-made decorative items
4. Christmas tree ornaments
5. Miscellaneous Christmas crafts
6. Jewelry
7. Woodwork (trays, birdhouses, lamps, breadboxes, etc.)
8. Ceramics (must be hand made - not just painted)
9. Handmade dolls/animals
10. Decoupage articles
11. Woven baskets
12. Crewel
13. Macrame
14. Miscellaneous



### Class III - Needlework

**Exhibit all clothing items on clothes hangers.**

- |                            |                        |
|----------------------------|------------------------|
| 1. Sewing - clothing items | 8. Knitting - clothing |
| 2. Sewing - other items    | 9. Knitting - other    |
| 3. Embroidery              | 10. Applique           |
| 4. Cross-stitch            | 11. Candlewicking      |
| 5. Latch hook              | 12. Pillows            |
| 6. Quilting - machine      | 13. Crocheting         |
| 7. Quilting - hand stitch  | 14. Misc. needlework   |

### Class IV - Canned Goods

**Food Preservation should be entered in standard glass canning jars and sealed.**

#### Canned Vegetables

- |                 |                            |
|-----------------|----------------------------|
| 1. Tomatoes     | 3. Salsa/vegetable sauces  |
| 2. String beans | 4. Other canned vegetables |

#### Pickles

- |                     |                           |
|---------------------|---------------------------|
| 1. Peach pickles    | 4. Relish/chow-chow/etc.  |
| 2. Cucumber pickles | 5. Other pickled products |
| 3. Pepper pickles   |                           |

#### Canned Fruit

1. Canned fruit

#### Preserves

- |         |        |          |
|---------|--------|----------|
| 1. Pear | 2. Fig | 3. Other |
|---------|--------|----------|

#### Jams

1. Jams

#### Jellies

- |                |                 |
|----------------|-----------------|
| 1. Fruit jelly | 2. Pepper jelly |
|----------------|-----------------|



#### Syrup/Honey

- |          |          |
|----------|----------|
| 1. Syrup | 2. Honey |
|----------|----------|



# Family and Consumer Science 4-H & Youth Exhibits Continued



## Class V - Baked Goods

Baked goods MUST be brought to the fairground between the hours of 7:30am and 9:00am on Tuesday, October 4th. Baked goods should be on or in disposable containers. A food exhibitor must enter a whole cake, five or more cookies, or a whole pie. All baked goods will be sold as a donation to support the Washington County 4-H Club programs.

### Candy

1. Homemade Candy

### Cakes

1. Layer Cake
2. Pound Cake
3. Decorated Cake
4. Fruit Cake

### Cookies

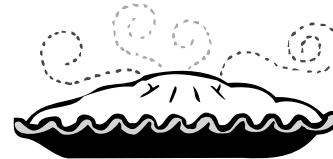
1. Drop
2. Rolled and Cut
3. Bar
4. Pressed

### Breads

1. Baked Breads

### Pies

1. Fruit
2. Cream
3. Fried Pies
4. Other



All judging will be broken up into 6 age groups.  
The groups are:

- A. Exceptional Children (Pre-K - 12th)
- B. Pre-K - 2nd Grades
- C. 3rd - 5th Grades
- D. 6th - 8th Grades
- E. 9th - 12th Grades
- F. Adults (Art category for adults is divided into different categories - See 2009 fair book for details).

## Cash Prizes Will Be Awarded!

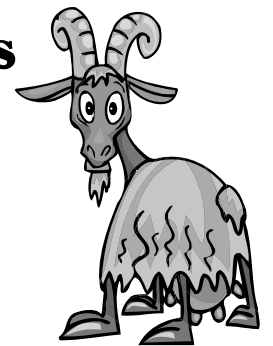


## Washington County 4-H Exhibits



Please take time to visit our 4-H exhibits at the fair this year!

Meat Goats & Dairy Goats - Nathan van Loenen  
Chickens - Tineke van Loenen  
Market Hogs - Rachel Hortman



Washington County 4-H  
Information Booth

“I Am Georgia 4-H” Posters





# Cloverleaf 4-H Fall Calendar



Registration and Payment for events listed below can be made at the Washington County 4-H Office.  
For more information contact the 4-H Office at 552-2011.

## 4-H Pansy Sale

This is a great way to earn some extra money...

1st place - \$50.00

2nd place - \$25.00

3rd place - \$10.00

We will be taking orders for Pansies through September 30, 2011. Orders and money must be turned in by this date. Pansies must be picked up at the 4-H office on October 11, 2011 between the hours of 9:00 a.m. and 6:00 p.m.

## 4-H S.A.F.E Shooting Sports

The Washington County 4-H JOAD Archery Team and 4-H B.B. Gun Teams are beginning another exciting season! Practices are on every other Sunday afternoon from 2:00-4:00 p.m. at the Farm Bureau Ag Center in Tennille!

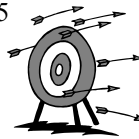
### Archery Practice Schedule

September 11 & 25

October 16

November 6 & 20

December 4 & 18



### B.B. Gun Practice (TBA)

If your parents are interested in helping coach our team, please have them contact the 4-H office.



## Cotton Boll & Consumer Jamboree November 14, 2011

- Cloverleaf and Juniors compete on the Junior Team and Seniors on the Senior Team.
- Juniors will prepare a poster and 30 second commercial that promotes cotton and will use the poster while presenting the commercial.
- Seniors will prepare a 90 second Public Service Announcement about cotton.

The Junior and Senior Teams will also participate in a consumer judging contest. Don't worry, we'll get you ready for this. We will begin our practices on Thursday, October 13th at 4:00pm at the 4-H Office.

## 4-H Coca-Cola Sale

If you are interested in earning money to help pay for Cloverleaf Camp at Rock Eagle next summer you don't want to miss this! You will get a credit to be applied towards camp for all drinks you sale! Sale will begin in October. Deadline to order is November 10th. Pickup will be November 17th. See Mrs. Cindy at the 4-H Office for a form!

## CLOVERLEAF 4-H COMMUNITY SERVICE PROJECTS



### In School Community Service Project:

Your **Community Service Project** for the year will be collecting can pop-tabs for the Ronald McDonald House. Your club will earn 50 points for every gallon sized zip lock bag full of can tabs turned in.

**September** Collect school supplies for local primary schools like Hand Sanitizer, Fiskars scissors, Boxes of Crayola Crayons, Boxes of Crayola Markers, #2 pencils, Zip-Lock bags (any size), Spiral Notebooks (wide rule only), Boxes of Kleenex, Pencil top erasers, Elmer's Glue, bookbag, Plastic pencil boxes, Boxes of Band-Aids, Writing Paper, Wide rule notebook paper, and D'Nealian Tablet Paper (wide lines) These items are due no later than your October 4-H Club Meeting.

My next 4-H Club Meeting at school will be held on:

Parent Signature: My child has shared this month's 4-H newsletter with me.